



# TOWBAR INSTALLATION INSTRUCTIONS

PART NUMBER 03323RW

HINO 300 SERIES 616 TIPPER



## PRODUCT DETAILS:

Part Number:	03323RW	Maximum Towing Braked:	3500	kg
ECU Number:	N/A	Maximum Towing Unbraked:	750	kg
Tail Harness Length Required:	1200 mm	Maximum Static Ball Load:	350	kg
Pintle Part Number:	74120			
Wiring Part Number:	AMCL5A-3001-WL			

## FITTING DETAILS:

Towbar Installation Time:	45 Mins.	Vehicle Coding Required:	NO
Wiring Installation Time:	15 Mins.	RPA Disable/Other:	NO
Total Installation Time:	60 Mins.	Note:	
Bumper Cut Required:	No		<ul style="list-style-type: none"><li>The Lighting Voltage is 24V.</li></ul>



# TOWBAR INSTALLATION INSTRUCTIONS

PART NUMBER 03323RW

HINO 300 SERIES 616 TIPPER

**ENSURE THAT INSTRUCTIONS ARE UNDERSTOOD PRIOR TO FITMENT.**

## **i** BEFORE YOU START:

Hayman Reese recommends that instructions are read completely prior to fitment. Check all hardware items have been included refer to assembly diagram. Please ensure this towbar is only fitted to vehicle models as per Hayman Reese application guide ([www.haymanreese.com.au](http://www.haymanreese.com.au)).

**NOTE: Compliance (Engineering Sign Off) upon completion of fitting**



It is important to check if the fitting of this towbar requires sign off after fitment by an approved vehicle engineer. For Light vehicles (Under 4500kg GVM) this will depend upon the state or territory in which the vehicle is registered. For vehicles over 4500kg GVM the requirements of the National Heavy Vehicle Regulator will apply. Please consult your local transport authority (or NHVR) for guidance on this matter.

### Drilling

- For any required drilling during installation, ensure that the area is clear of fuel, electrical & other components that may be damaged.
- All holes drilled into the body panels shall have all burrs & swarf removed then coated with a suitable rust preventative paint.

### Bolts/Fasteners

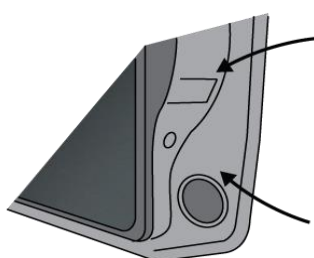
- Ensure that all hardware is fastened to correct torque as specified in this fitting instruction.
- All fasteners supplied with this product are used to achieve a specified clamp loading. If replacement is required ensure that fasteners of the same grade and class are used.



**NOTE: Achieving correct torque is critical to proper installation and responsibility of the installer. Towbar failures attributed to tension issues from over tightening or under tightening are not covered by Hayman Reese warranty.**

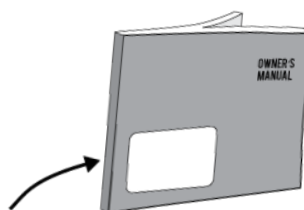
### Product Labels

- a. Towbar load rating sticker provided with this product shall be conspicuously located on inside rear end of the driver's door.
- b. Powertrain Control Module (PCM)/Body Control Module (BCM) upgrade warning label will be provided in towbar kit for vehicles as required. Affix warning label in door and owner's handbook.



Place **Load Rating sticker** inside driver's door here

Place **Vehicle PCM/ BCM upgrade warning label** in door AND on front cover of owner's service handbook



## **WARNING:**

**Do not, drill, cut, weld or otherwise modify the towbar.**

**FOR TOWING PURPOSES ONLY - This towbar is designed and tested by Hayman Reese to adhere to ADR 62/02 which provides only for the expected load demands of towing.**

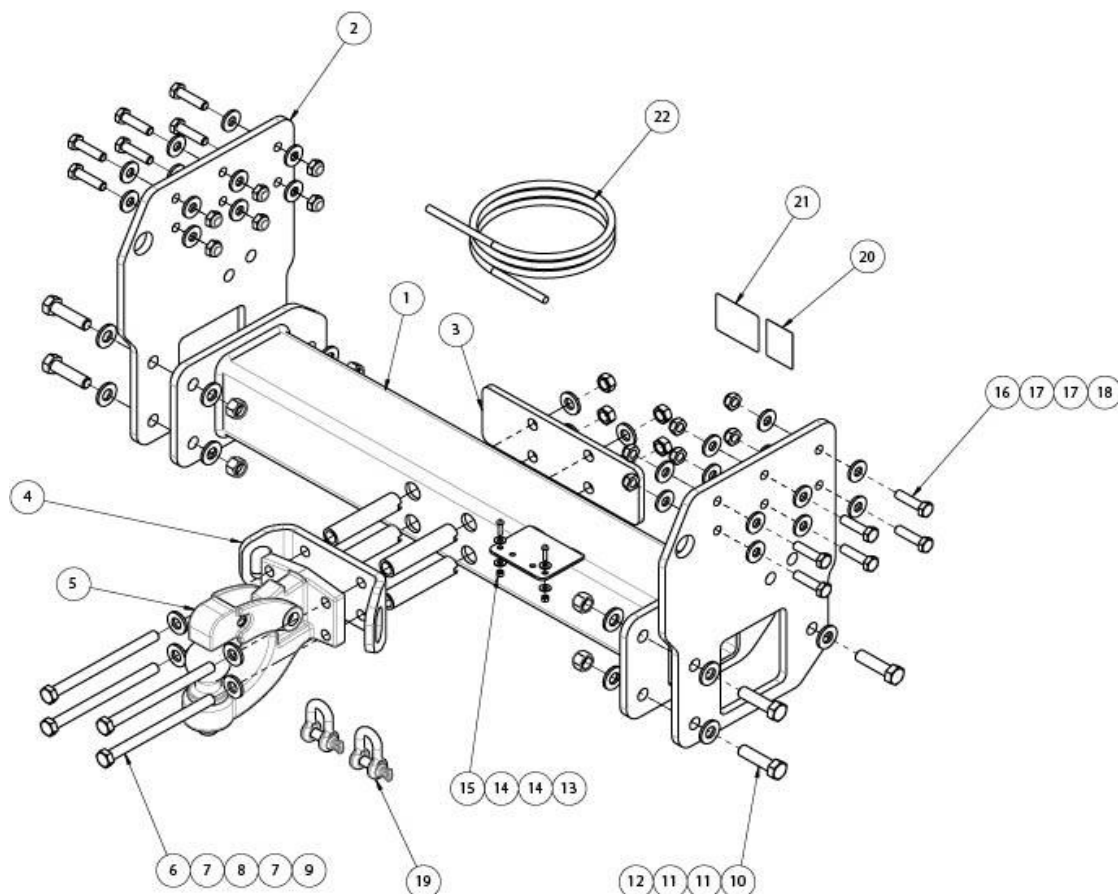


# TOWBAR INSTALLATION INSTRUCTIONS

PART NUMBER 03323RW

HINO 300 SERIES 616 TIPPER

## **i** TOWBAR ASSEMBLY DIAGRAM



ITEM	DESCRIPTION	QTY
1	CROSTUBE ASSEMBLY 700	1
2	HINO 616 TIPPER SIDEARM	2
3	LOAD SPREADER PLATE	1
4	BOLT ON CHAIN CONNECTION	1
5	PINTLE HK 8TON W/50MM BALL	1
6	BOLT HEX HD M12x160x1.75P	4
7	WASHER PLAIN 1/2	8
8	NOTCHED CRUSH TUBE	4
9	NUT M12 NYLOC	4
10	BOLT HEX HD M14x50x1.5P	6
11	WASHER PLAIN M14	12

ITEM	DESCRIPTION	QTY
12	NUT NYLON INT LOCK HEX M14x1.5P	6
13	SCREW PAN HD M4x16x0.7P	2
14	WASHER PLAIN 3/16	4
15	NUT NYLON INT LOCK HEX M4x0.7P	2
16	BOLT HEX HD M10x40x1.5P	12
17	WASHER PLAIN M10	24
18	NUT NYLON INT LOCK HEX M10x1.5P	12
19	"D" SHACKLE 10mm <sup>2</sup>	2
20	H.R STICKER	1
21	ACRYLIC COMPLIANCE LABEL	1
22	WIRING LOOM	1



# TOWBAR INSTALLATION INSTRUCTIONS

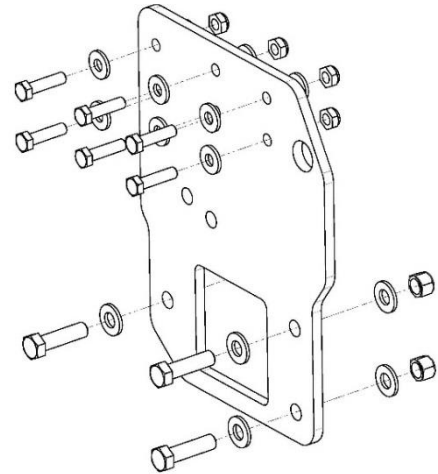
PART NUMBER 03323RW  
HINO 300 SERIES 616 TIPPER

1. Remove the tow hook from LHS chassis rail. Retain fasteners.

Loosely bolt the side plates to chassis rail with 6 x M10 bolts, complete with 2 x washers and 1 x nut per bolt.

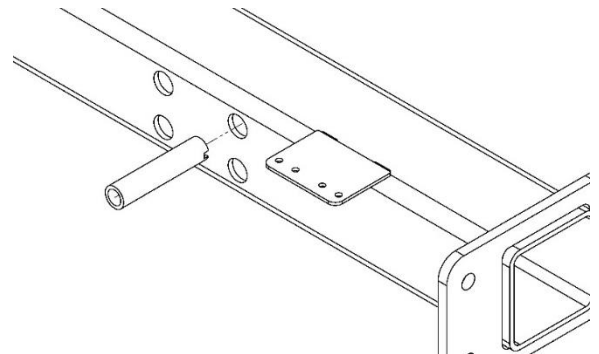
Repeat for opposite side.

Secure tow hook to side plate using retained fasteners. Torque tow hook fasteners to 140 Nm.

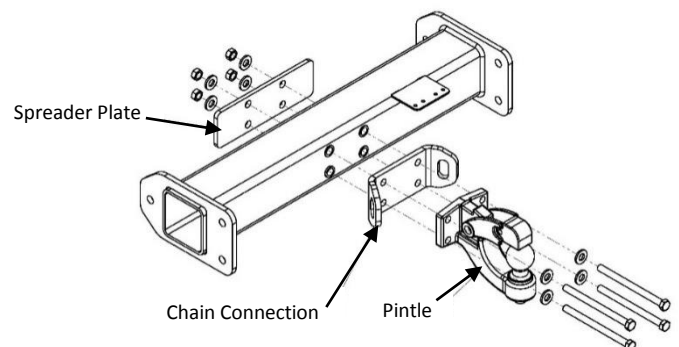


2. Insert crush tubes into centre welded section ensuring that the notched face of the crush tube locates to the mating notch on the rear face of the cross beam.

Notch will help to ensure that tubes do not fall out during fitment.



3. With crush tubes in place, loosely bolt the load spreader plate, bolt on chain connection plate, and pintle to the cross beam with 4 x M12 x 160mm bolts complete with 2 x washers and 1 x nyloc nut per bolt.





# TOWBAR INSTALLATION INSTRUCTIONS

PART NUMBER 03323RW

HINO 300 SERIES 616 TIPPER

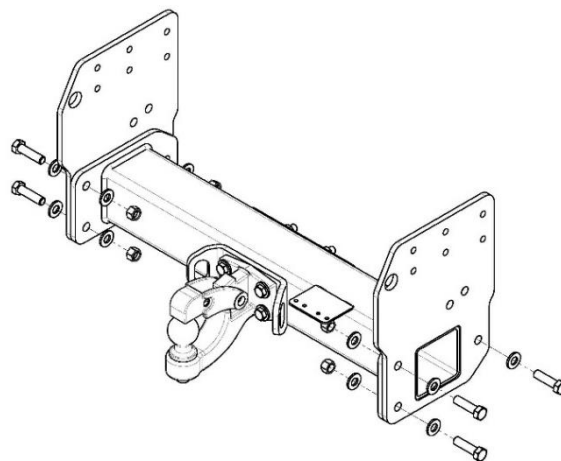
4. With 2 people, lift centre welded section up to side plates and loosely fit with 6 x M14 x 50mm bolts (3 per side) complete with 2 x flat washers and 1 x nut per bolt.

Tighten bolts to the following torques:

**M10 - 44 Nm**

**M12 - 77 Nm**

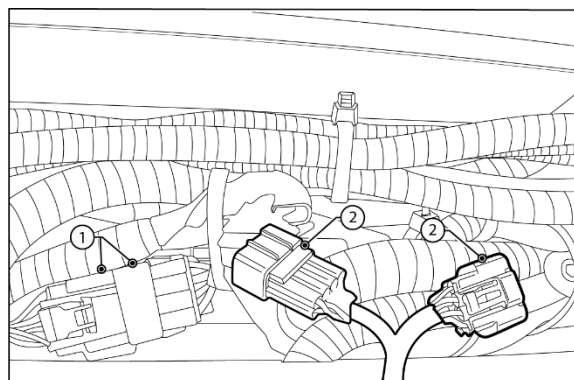
**M14 - 140 Nm**



## IMPORTANT

Due to possible vehicle variations, always confirm any noted vehicle colour wires with a multi-meter to ensure the correct function is identified before soldering or scotch locking. For vehicle wires denoted with two colours (example; RED/GREEN) the first colour will always be the main wire colour while the second colour is the thinner trace colour on the wire.

5. From the outside of the vehicle, locate and disconnect the tail light 8-way connectors (1).
6. Connect the Trailer Wiring Harness (P/No: AMCL5A-3001-WL) mating 8-way connectors (2) in between.



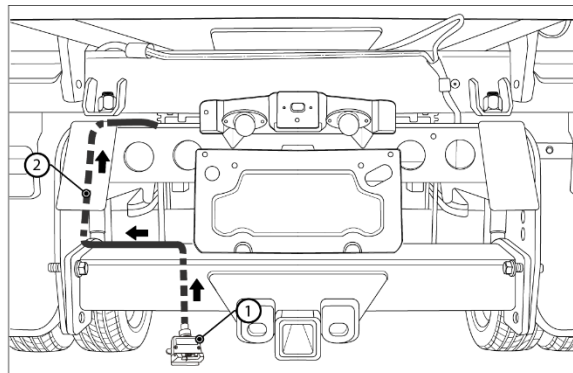


# TOWBAR INSTALLATION INSTRUCTIONS

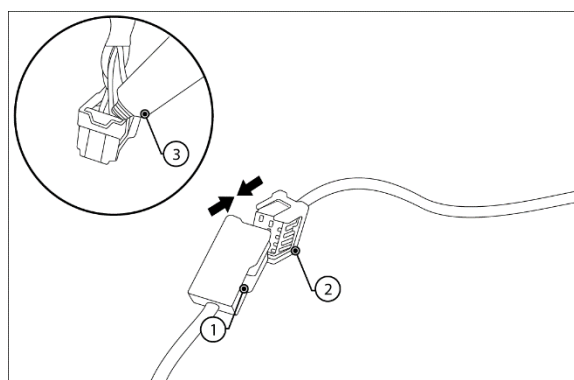
PART NUMBER 03323RW

HINO 300 SERIES 616 TIPPER

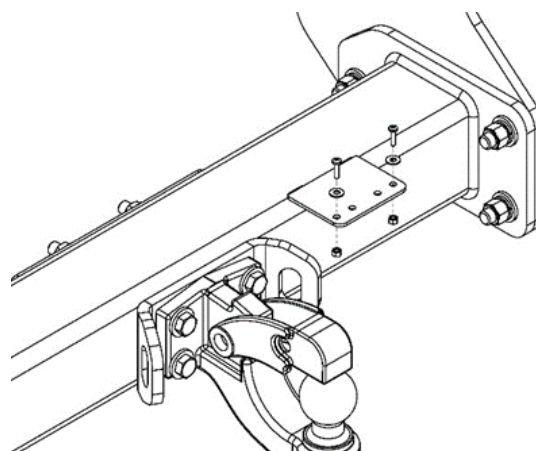
7. Mount the trailer socket (1) to the towbar mounting bracket using M4 fasteners (not supplied).
8. Route the Tail Harness (tail length 1200mm) (2) across the towbar towards the LHS of the vehicle.



9. Waterproof the Trailer Harness 8-way connector (1) and the tail harness 8-way male connector (2) using silicone or grease (3).
10. Connect the Tail Harness 8-way connector (1) to the Trailer Harness mating 8-way connector (2).



11. Attach trailer plug to bracket with 2 x M4 x 16mm screws with 1 x washer and 1 x nut per screw.
12. Test the Trailer Harness function using a Light Board or multi-meter.
13. Secure all Harnesses using Cables Ties (not supplied).
14. Re-fit all removed parts and secure all fasteners, ensuring there are no squeaks or rattles.
15. Place the instructions in the glove box after fitment.





# CUSTOMER INFORMATION

PLACE THESE INSTRUCTIONS IN THE  
VEHICLE'S GLOVEBOX AFTER INSTALLATION

**THANK YOU FOR PURCHASING HAYMAN REESE.  
WITH CORRECT MAINTENANCE AND CARE THIS PRODUCT WILL PROVIDE A  
LIFETIME OF TROUBLE-FREE OPERATION.**

## **i TOWBAR MAINTENANCE AND CARE:**

1. Hayman Reese recommends routine inspection of your towbar to ensure trouble free towing.
  - Bolt security and tension should be regularly inspected and checked for correct tension. Replace any worn or defective parts with suitable grade & class fasteners. Inspection should be requested to coincide with vehicle major services.
2. It is the owner's responsibility to ensure towing and down ball weight capacities of the towing vehicle are not exceeded.
  - Towing and down ball weights allowable may differ according to model variations. Please refer to owner's manual or vehicle dealer to confirm exact rating for your vehicle model variant.
  - It is not uncommon for the vehicle tow rating to differ from the towbar rating. When this occurs, the lesser rating must be adhered to.
  - For vehicles fitted with enhanced vehicle functions that may be altered/changed when towing i.e Trailer sway mitigation, blind spot detection, adaptive cruise control etc. Please consult owner's manual to understand changes enabled when towing and after towing.

## **i WARRANTY INFORMATION:**

Hayman Reese Towbars are covered by a Lifetime Warranty.

Our goods come with guarantees that cannot be excluded under the Australian Consumer Law. You are entitled to a replacement or refund for a major failure and for compensation for any other reasonably foreseeable loss or damage. You are also entitled to have the goods repaired or replaced if the goods fail to be of acceptable quality and the failure does not amount to a major failure.

For further details please visit [www.haymanreese.com.au/warranty](http://www.haymanreese.com.au/warranty) or contact customer service on 1800 812 017 or [info@haymanreese.com.au](mailto:info@haymanreese.com.au).