

HAYMAN REESE
PART No: 03182RW
LEXUS RX350 GGL25R

INSTALLATION INSTRUCTIONS

PLEASE ENSURE THAT INSTRUCTIONS ARE UNDERSTOOD PRIOR TO FITMENT
PLACE THESE INSTRUCTIONS IN THE VEHICLE'S GLOVEBOX AFTER INSTALLATION IS COMPLETED



Total Installation Time (Towbar and Wiring): Approx 60 Mins

Towbar Installation Instructions

Towbar capacity

LEXUS RX350 GGL25R CL4

Part Number 03182RW

Max Towing Braked 1500kg

Max Towing Unbraked 750kg

Max Static Ball Load 150kg

Tail Harness Length Required: 1200 mm

Hayman Reese (Cequent)
PO Box 4050, Dandenong South VIC 3164
Phone 1800 812 017 Email info@haymanreese.com.au

www.haymanreese.com.au



HAYMAN REESE
PART No: 03182RW
LEXUS RX350 GGL25R

INSTALLATION INSTRUCTIONS

PLEASE ENSURE THAT INSTRUCTIONS ARE UNDERSTOOD PRIOR TO FITMENT
PLACE THESE INSTRUCTIONS IN THE VEHICLE'S GLOVEBOX AFTER INSTALLATION IS COMPLETED

Warning:

1. Do not, drill, cut, weld or otherwise modify the towbar.
2. If you are using electric welding on a motor vehicle, **always** check that the vehicle is not equipped with electronic engine or instrument management equipment. Failure to do so could **destroy** any on board computers. If in doubt, check with the vehicle's manufacturer.
3. If TBM is used in inverted position tow ball may make contact with rear tailgate when lowered, which could cause damage.

General:

1. Ensure all hardware items have been included refer to assembly diagram.
2. It is recommended that the instructions are read through and completely understood before making any attempt to fit this product.
3. Be wary of any changes to vehicle designs or other accessories that may conflict with the installation of this product.
4. Before drilling ensure that the area is clear of fuel, electrical & other components.
5. All holes drilled into the body panels shall have all burrs & swarf removed then coated with a suitable rust preventative paint.
6. The high tensile fasteners supplied with this product were used to achieve the specified rating. If replacement is required ensure that fasteners of the same rating & quality are used. Contact an authorised **Hayman Reese** dealer if further information is required.
7. Ensure that all hardware is fastened to torque list below check fasteners on regular basis.
8. Towbar load rating sticker provided with this product shall be conspicuously located on inside rear end of the driver's door. **(See diagram below).**
9. Hayman Reese recommends that you check your tow ball to ensure that it complies with the Australian standards **AS 4177.2**.
10. **PLEASE NOTE:** It is advised to remove your LUG or TBM when not actually towing so as to produce a clear view of the vehicles registration plate if obscured, and to also provide maximum available departure angle.

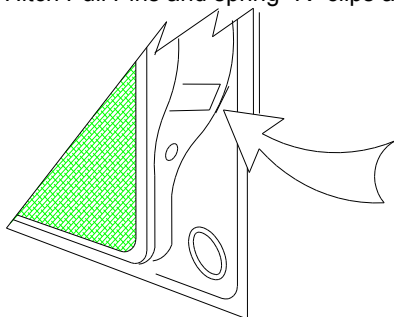
Tow bar Maintenance and Care.

Hayman Reese recommends that bolt torque's, as listed below, are routinely and regularly inspected and checked for correct tension. Replace any worn or defective parts.

We recommended to remove Tow Ball Mounts (TBM's, tongues or lugs) when not being used for any considerable length of time.

So as to avoid injury, when not towing it is suggested that the tongue, Pull Pin and R-clip are removed then stored in a safe, clean and dry place, away from excessive moisture.

Hitch Pull Pins and spring "R" clips are regularly checked for proper installation. Replace any worn or defective parts.



Place load rating sticker
inside driver's door here

FOR TOWING PURPOSES ONLY
For towing capacity details please refer to vehicle
owner's manual or to the manufacturer. Overloading can
void your warranties.

Hayman Reese (Cequent)
PO Box 4050, Dandenong South VIC 3164
Phone 1800 812 017 Email info@haymanreese.com.au

www.haymanreese.com.au



HAYMAN REESE
PART No: 03182RW
LEXUS RX350 GGL25R

INSTALLATION INSTRUCTIONS

PLEASE ENSURE THAT INSTRUCTIONS ARE UNDERSTOOD PRIOR TO FITMENT
PLACE THESE INSTRUCTIONS IN THE VEHICLE'S GLOVEBOX AFTER INSTALLATION IS COMPLETED

PLEASE ENSURE THAT INSTRUCTIONS ARE UNDERSTOOD PRIOR TO FITMENT



Maximum Trailer Electrical Load

This vehicle has a limited amount of current available for powering trailer lighting circuits. If the vehicle circuits are overloaded by the trailer lighting circuits, vehicle fuses can fail and potential damage to wiring can occur. While most trailers have a small number of lamps on them, some larger trailers (especially 2 axle trailers and caravans) have a large number of lighting circuits.

The ECU for the Lexus RX Series allows for any large trailer to be towed without concern about drawing too much power from the vehicle circuits. Refer to the tables below to see the maximum lighting loads with and without the ECU and power harness options:

Recommended Maximum Trailer Electrical Load without ECU

Typically LED trailer tail lights

Light Signal Name	Load (Watts) Total	Current Load (Amps Total (at 12V)
Left Turn	21W	1.75A
Right Turn	21W	1.75A
Tail Lamps	10W	0.83A
Reverse Lamps	42W	3.5A
Stop Lamps	42W	3.5A

Recommended Maximum Trailer Electrical Load with ECU

Typically Incandescent trailer tail lights

Light Signal Name	Load (Watts) Total	Current Load (Amps Total (at 12V)
Left Turn	96W	8A
Right Turn	96W	8A
Tail Lamps	132W	11A
Reverse Lamps	96W	8A

Hayman Reese (Cequent)
PO Box 4050, Dandenong South VIC 3164
Phone 1800 812 017 Email info@haymanreese.com.au

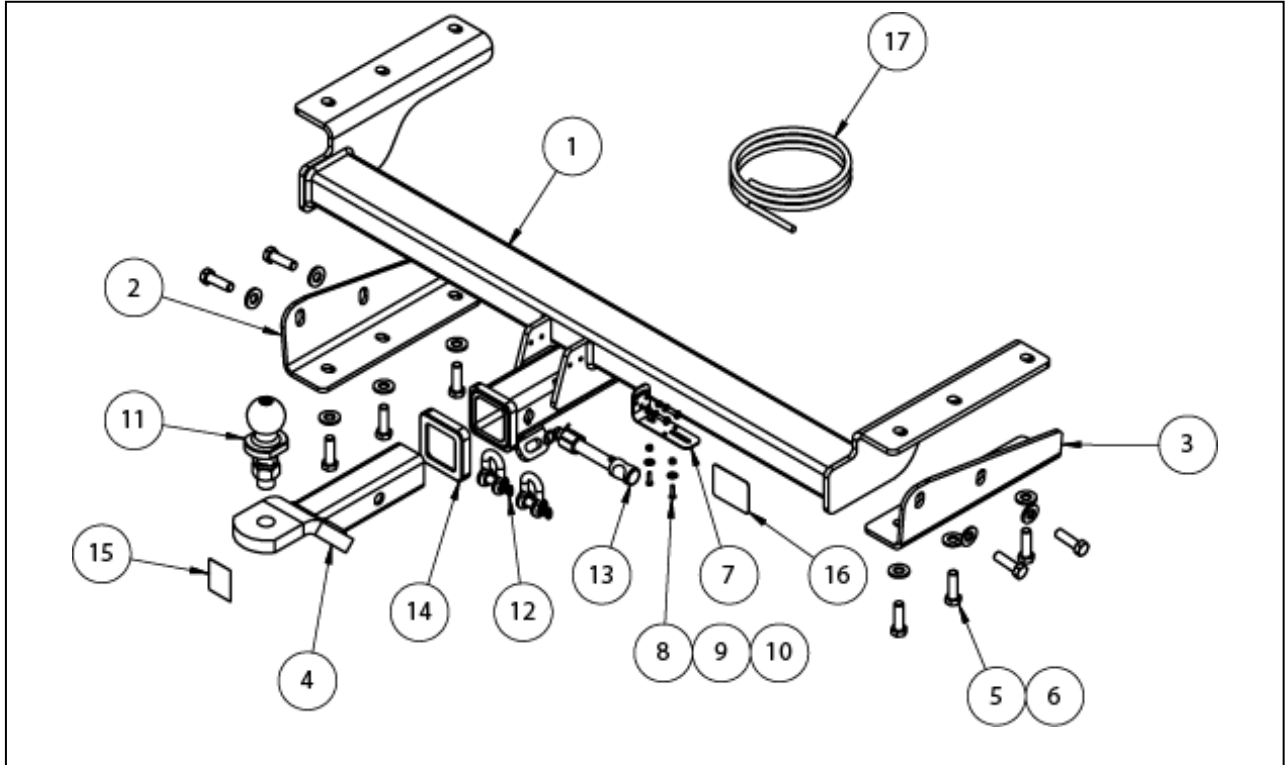
www.haymanreese.com.au



HAYMAN REESE
PART No: 03182RW
LEXUS RX350 GGL25R

INSTALLATION INSTRUCTIONS

PLEASE ENSURE THAT INSTRUCTIONS ARE UNDERSTOOD PRIOR TO FITMENT
 PLACE THESE INSTRUCTIONS IN THE VEHICLE'S GLOVEBOX AFTER INSTALLATION IS COMPLETED



ITEM	DESCRIPTION	QTY
1	LEXUS RX350 WELDED ASSEMBLY	1
2	SIDEARM PASSENGER	1
3	SIDEARM DRIVER	1
4	TRAILER BALL MOUNT	1
5	BOLT M12 – 1.25 x 40 MM GR 8.8 Z/P	10
6	WASHER FLAT 1/2" x 1 1/8" x 1/8"	10
7	UNIVERSAL PLUG BRACKET KIT	1
8	SCREW PAN XR MTS M4-0.7 x 16 Z/P	2
9	FLAT WASHER ZP 3/16 x 1/2	2

ITEM	DESCRIPTION	QTY
10	NUT NYLOC M4-0.7 Z/P	2
11	HR TOWBALL	1
12	"D" SHACKLE 10 MM	2
13	ANTI-RATTLE PULL PIN ASSY GOLD	1
14	HITCH BOX COLLAR COVER	1
15	H.R STICKER	1
16	ACRYLIC CP LABEL	1
17	WIRING LOOM	1

Hayman Reese (Cequent)
 PO Box 4050, Dandenong South VIC 3164
 Phone 1800 812 017 Email info@haymanreese.com.au

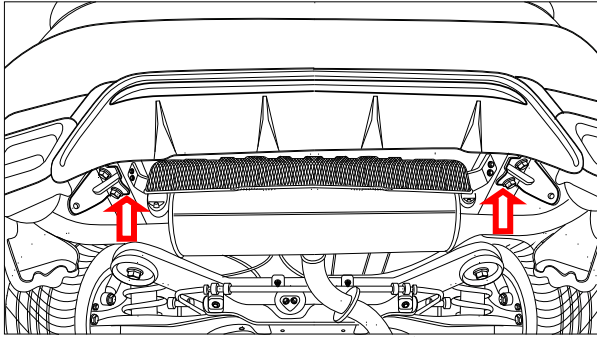
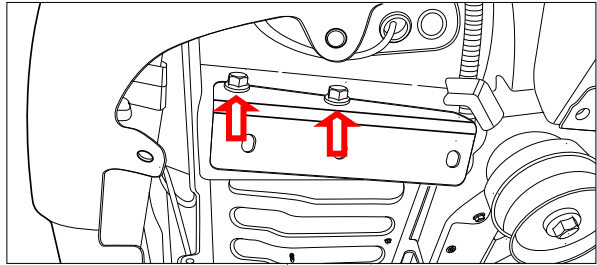
www.haymanreese.com.au



HAYMAN REESE
PART No: 03182RW
LEXUS RX350 GGL25R

INSTALLATION INSTRUCTIONS

PLEASE ENSURE THAT INSTRUCTIONS ARE UNDERSTOOD PRIOR TO FITMENT
PLACE THESE INSTRUCTIONS IN THE VEHICLE'S GLOVEBOX AFTER INSTALLATION IS COMPLETED

<p>1. Remove and discard 2 x Bolts from each of the 2 factory tow hooks; remove and discard the 2 factory tow hooks.</p>	
<p>2. Loosely secure sidearm bracket to outboard side face of chassis rail, using 2 x M12 Bolts, complete with 1 x Flat washer per Bolt.</p> <p>Repeat for opposite side of vehicle.</p>	

Hayman Reese (Cequent)
PO Box 4050, Dandenong South VIC 3164
Phone 1800 812 017 Email info@haymanreese.com.au

www.haymanreese.com.au



HAYMAN REESE
PART No: 03182RW
LEXUS RX350 GGL25R

INSTALLATION INSTRUCTIONS

PLEASE ENSURE THAT INSTRUCTIONS ARE UNDERSTOOD PRIOR TO FITMENT
PLACE THESE INSTRUCTIONS IN THE VEHICLE'S GLOVEBOX AFTER INSTALLATION IS COMPLETED

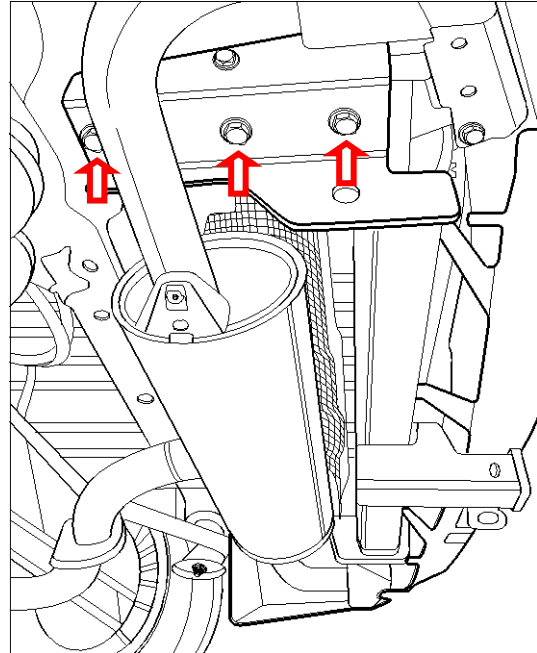
3. Tilt sidearm brackets aside and offer Towbar welded assembly to vehicle; directly against underside of chassis rail.

Tilt sidearm brackets back into position such that the towbar welded assembly is between the sidearm bracket and the chassis rail underside face.

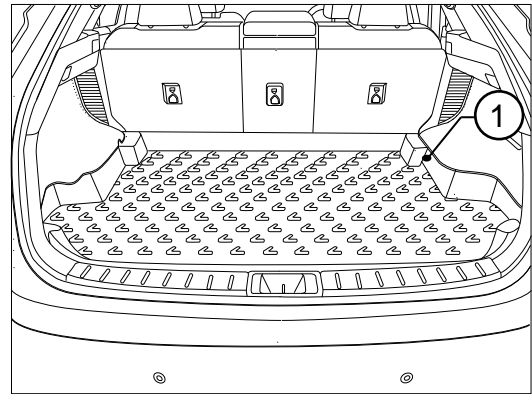
Loosely secure sidearm brackets and towbar welded assembly to underside of chassis rail using 3 x M12 Bolts, complete with 1 x Flat Washer per Bolt.

Repeat for opposite side of vehicle.

4. Tighten 10 x M12 fasteners to 89N.m torque.



5. In the luggage compartment, remove the rubber mat (1).



Hayman Reese (Cequent)
PO Box 4050, Dandenong South VIC 3164
Phone 1800 812 017 Email info@haymanreese.com.au

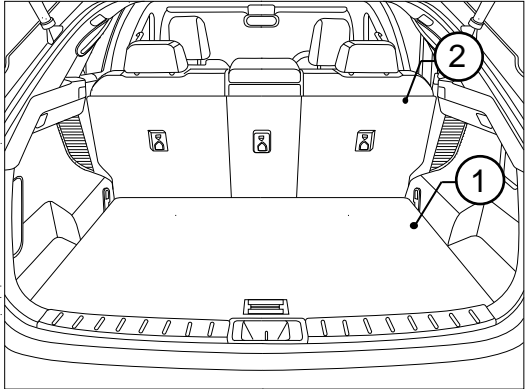
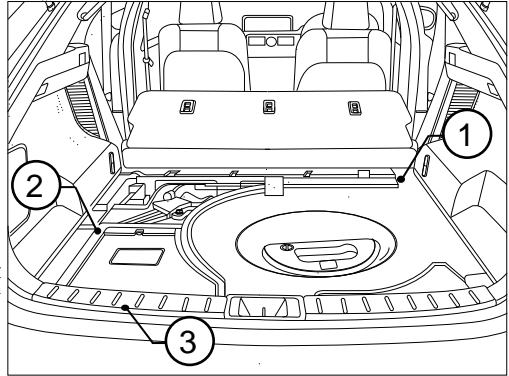
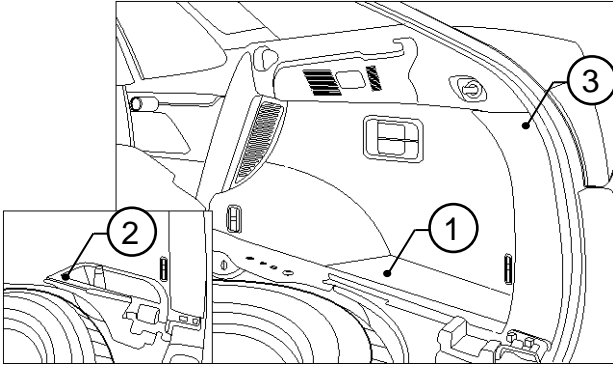
www.haymanreese.com.au



HAYMAN REESE
PART No: 03182RW
LEXUS RX350 GGL25R

INSTALLATION INSTRUCTIONS

PLEASE ENSURE THAT INSTRUCTIONS ARE UNDERSTOOD PRIOR TO FITMENT
PLACE THESE INSTRUCTIONS IN THE VEHICLE'S GLOVEBOX AFTER INSTALLATION IS COMPLETED

<p>6. Remove the floor carpet (1) and fold down the rear seats (2).</p>	
<p>7. Remove the spare wheel cover (1), battery cover (2) and luggage compartment rear trim (3).</p>	
<p>8. Remove the RHS rear quarter carpet (1) and the tool tray fasteners and tool tray (2) from underneath.</p> <p>9. Remove the luggage compartment RHS rear centre trim (3).</p>	

Hayman Reese (Cequent)
PO Box 4050, Dandenong South VIC 3164
Phone 1800 812 017 Email info@haymanreese.com.au

www.haymanreese.com.au

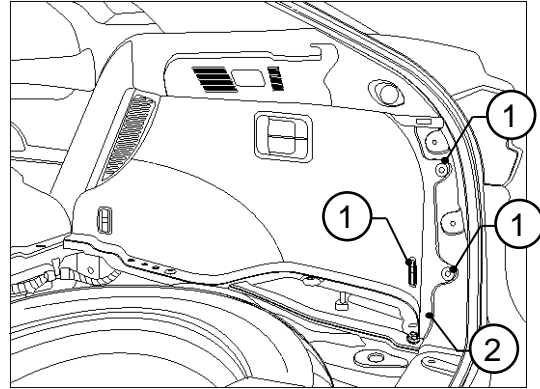


HAYMAN REESE
PART No: 03182RW
LEXUS RX350 GGL25R

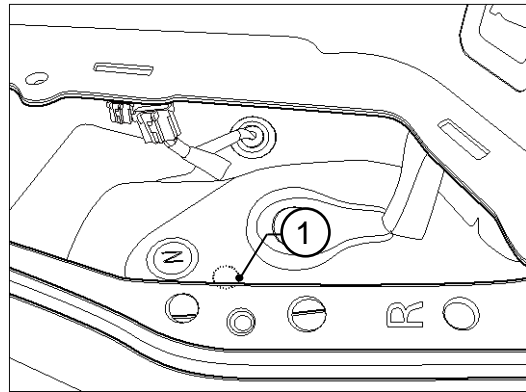
INSTALLATION INSTRUCTIONS

PLEASE ENSURE THAT INSTRUCTIONS ARE UNDERSTOOD PRIOR TO FITMENT
PLACE THESE INSTRUCTIONS IN THE VEHICLE'S GLOVEBOX AFTER INSTALLATION IS COMPLETED

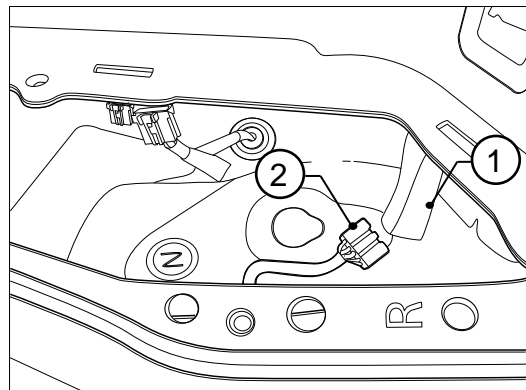
10. Remove the required fasteners (1) to allow dislodgment of the RHS luggage compartment trim (2).



11. At the luggage compartment RHS rear quarter sheet metal area, drill out a Ø30mm hole into the vehicle sheet metal floor (1). File down any rough or sharp edges and apply rust inhibitor (not supplied) after drilling.



12. Locate the RHS rear quarter vehicle breakout connector (1) and connect the trailer patch (P/No:101499-WL) mating connector (2).



Hayman Reese (Cequent)
PO Box 4050, Dandenong South VIC 3164
Phone 1800 812 017 Email info@haymanreese.com.au

www.haymanreese.com.au



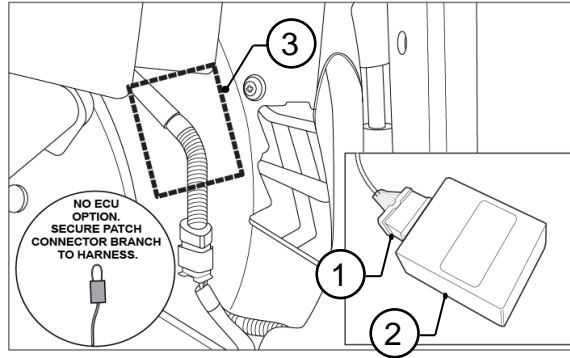
HAYMAN REESE
PART No: 03182RW
LEXUS RX350 GGL25R

INSTALLATION INSTRUCTIONS

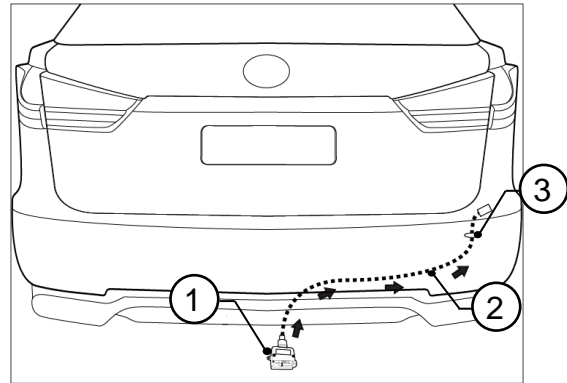
PLEASE ENSURE THAT INSTRUCTIONS ARE UNDERSTOOD PRIOR TO FITMENT
PLACE THESE INSTRUCTIONS IN THE VEHICLE'S GLOVEBOX AFTER INSTALLATION IS COMPLETED

If an ECU is required, remove the patch connector and go to Step 13. If it is not required go to Step 14.

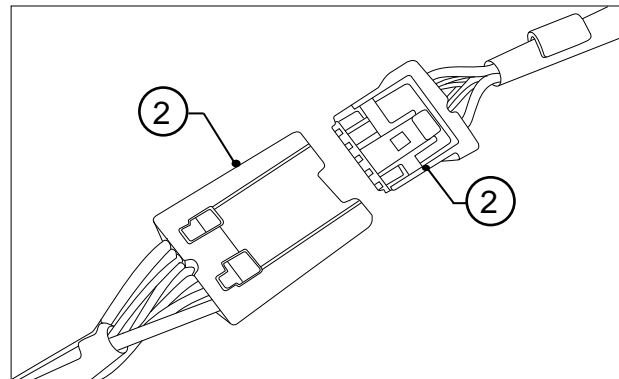
13. Connect the trailer patch connector (1) to the ECU (04826) (2). Remove the backing from the back of the ECU and mount the ECU (2) onto the wheel arch area (3) near the vent. **Ensure ECU is mounted with the connector pointing downwards.**



14. Route the tail harness (tail length: 1200mm) (2) across the RHS and up into the drilled out hole (3). Adjust the trailer patch harness grommet so that it is seated correctly and cable tie (not supplied) in place. **Keep harness routing clear of all sharp edges, moving parts and places of extreme heat.**



15. Connect the tail harness 8-way connector (1) to the trailer patch 8-way mating connector (2).



Hayman Reese (Cequent)
PO Box 4050, Dandenong South VIC 3164
Phone 1800 812 017 Email info@haymanreese.com.au

www.haymanreese.com.au



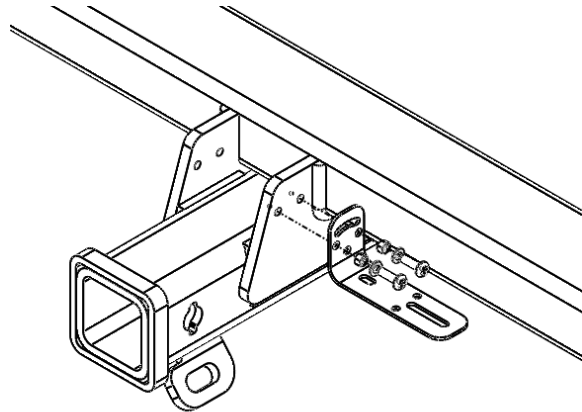
HAYMAN REESE
PART No: 03182RW
LEXUS RX350 GGL25R

INSTALLATION INSTRUCTIONS

PLEASE ENSURE THAT INSTRUCTIONS ARE UNDERSTOOD PRIOR TO FITMENT
PLACE THESE INSTRUCTIONS IN THE VEHICLE'S GLOVEBOX AFTER INSTALLATION IS COMPLETED

16. Test the trailer patch function using a light board or multi-meter.
17. Secure all harnesses using cable ties (not supplied).
18. Re-fit all removed trim parts and secure all fasteners, ensuring there are no squeaks or rattles.
19. The Rear Parking Sensors cannot be disabled, doing so will result in an error code being shown.

20. Install plug bracket to dropper of towbar assembly using 2 x M5 Screws, complete with 1 x flat Washer and 1 x M5 Nut with nylon insert per Screw.
21. Attach trailer plug to plug bracket using 2 x M4 Screws, complete with 1 x flat washer and 1 x M4 Nut with nylon insert per Screw.



Hayman Reese (Cequent)
PO Box 4050, Dandenong South VIC 3164
Phone 1800 812 017 Email info@haymanreese.com.au

www.haymanreese.com.au





FITTING INSTRUCTIONS

Smart Pin (55070BL)

• These fitting instructions are supplied to ensure understanding of how the SMART PIN should be fitted and used correctly.

• Once installed, we recommend **ALL** instructions are kept and placed in the vehicle glove box.

NOTE: Routine maintenance and inspection of the towbar & SMART PIN is required. Regularly inspect for wear and check the tightness of the SMART PIN NUT. Follow instructions below to retighten the nut when necessary.

***Do not tow with your vehicle if the R CLIP or the SMART PIN NUT is loose or missing. Replacement parts are available from your Hayman Reese Distributor.**

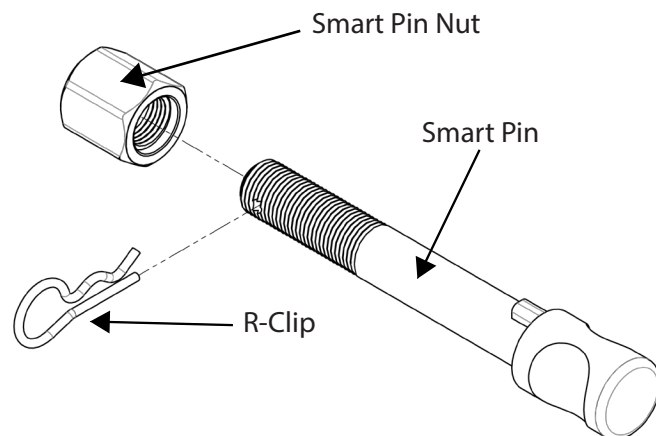
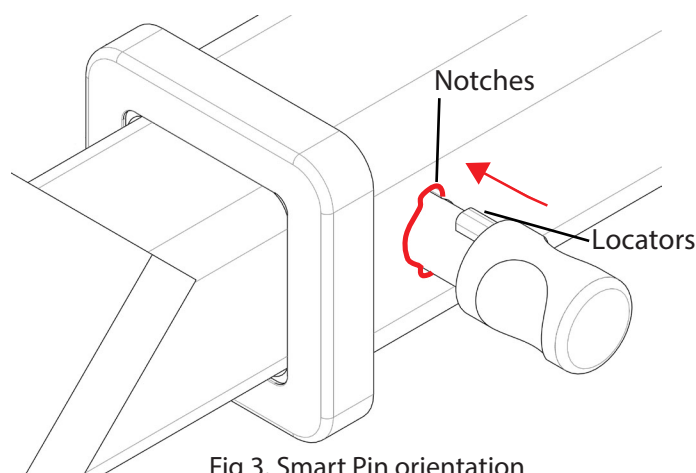
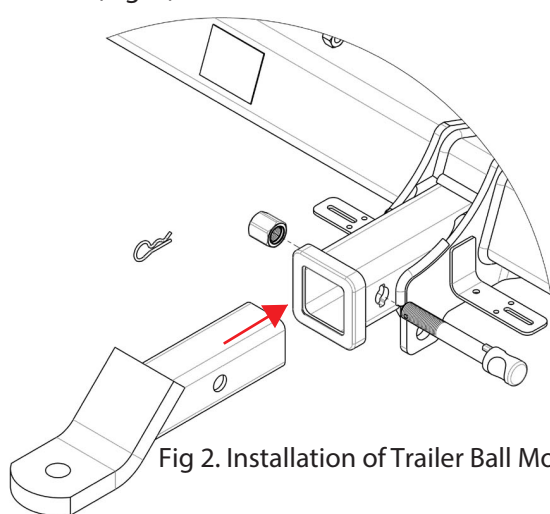


Fig 1. Smart Pin assembly

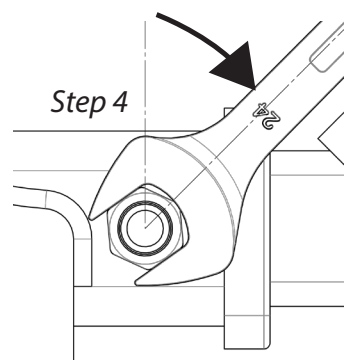
STEP 1 Insert Trailer Ball Mount (TBM) into towbar HITCHBOX, aligning hole in TBM SHANK with hole in HITCHBOX (Fig. 2).



STEP 2 Insert SMART PIN through hole in HITCHBOX and hole in TBM SHANK; ensure the LOCATORS are inserted into the NOTCHES in the HITCHBOX (Fig. 3).

STEP 3 Screw SMART PIN NUT onto SMART PIN; tighten SMART PIN NUT until finger tight, ensuring TBM is restrained from movement.

STEP 4 Tighten SMART PIN NUT by turning nut a further 1/8th of a turn in the clockwise direction using a 24mm spanner (Fig 4).



STEP 5 Install SMART PIN R CLIP through the hole on the SMART PIN (Fig. 1).

