

**HAYMAN REESE**

**PART No: 02866RW**

**FORD RANGER / MAZDA BT-50 CAB CHASSIS STANDARD**

## **INSTALLATION INSTRUCTIONS**

**PLEASE ENSURE THAT INSTRUCTIONS ARE UNDERSTOOD PRIOR TO FITMENT  
PLACE THESE INSTRUCTIONS IN THE VEHICLES GLOVEBOX AFTER INSTALLATION IS COMPLETED**



**Towbar Installation Instructions      Towbar capacity**  
**FORD RANGER / MAZDA BT50 CAB CHASSIS STANDARD**

**Part Number 02866RW**

**Max Towing Braked 3500kg**  
**Max Static Ball Load 350kg**

Rev: C

Page 1 of 6

27-11-12

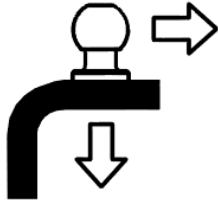
[www.haymanreese.com.au](http://www.haymanreese.com.au)



**HAYMAN REESE**  
**PART No: 02866RW**  
**FORD RANGER / MAZDA BT-50 CAB CHASSIS STANDARD**

## INSTALLATION INSTRUCTIONS

PLEASE ENSURE THAT INSTRUCTIONS ARE UNDERSTOOD PRIOR TO FITMENT  
PLACE THESE INSTRUCTIONS IN THE VEHICLES GLOVEBOX AFTER INSTALLATION IS COMPLETED



<b>Rating Braked</b>	<b>3500 Kg</b>
<b>Rating Unbraked</b>	<b>750 Kg</b>
<b>Max Static Ball Load</b>	<b>350 Kg</b>

### **Warning:**

1. Do not, drill, cut, weld or otherwise modify the towbar.
2. If you are using electric welding on a motor vehicle, **always** check that the vehicle is not equipped with electronic engine or instrument management equipment. Failure to do so could **destroy** any onboard computers. If in doubt, check with the vehicle's manufacturer.

### **General:**

1. Ensure all hardware items have been included
2. It is recommended that the instructions are read through and completely understood before making any attempt to fit this product.
3. Be wary of any changes to vehicle designs or other accessories that may conflict with the installation of this product.
4. Before drilling ensure that the area is clear of fuel, electrical & other components.
5. All holes drilled into the body panels shall have all burrs & swarf removed then coated with a suitable rust preventative paint.
6. The high tensile fasteners supplied with this product were used to achieve the specified rating. If replacement is required ensure that fasteners of the same rating & quality are used. Contact an authorised **Hayman Reese** dealer if further information is required.
7. Ensure that all hardware is fastened to torque list below check fasteners on regular basis.
8. Towbar load rating sticker provided with this product shall be conspicuously located on inside rear end of the driver's door. **(See diagram below).**
9. Hayman Reese recommends that you check your tow ball to ensure that it complies with the Australian standards **AS 4177.2**.
10. **PLEASE NOTE:** It is advised to remove your lug or tbn when not actually towing so as to produce a clear view of the vehicles registration plate if obscured, and to also provide maximum available departure angle.

### **Tow bar Maintenance and Care.**

Hayman Reese recommends that bolt torque's, as listed below, are routinely and regularly inspected and checked for correct tension. Replace any worn or defective parts.

We recommended to remove Tow Ball Mounts (TBM's, tongues or lugs) when not being used for any considerable length of time.

**HAYMAN REESE**  
**PART No: 02866RW**  
**FORD RANGER / MAZDA BT-50 CAB CHASSIS STANDARD**

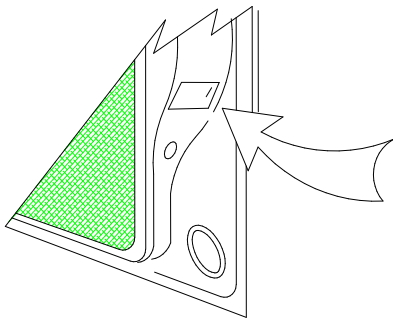
## INSTALLATION INSTRUCTIONS

PLEASE ENSURE THAT INSTRUCTIONS ARE UNDERSTOOD PRIOR TO FITMENT

PLACE THESE INSTRUCTIONS IN THE VEHICLES GLOVEBOX AFTER INSTALLATION IS COMPLETED

So as to avoid injury, when not towing it is suggested that the tongue, Pull Pin and R-clip are removed then stored in a safe, clean and dry place, away from excessive moisture.

Hitch Pull Pins and spring "R" clips are regularly checked for proper installation. Replace any worn or defective parts.



Place load rating sticker  
inside driver's door here

**RECOMMENDED ASSEMBLY TORQUE LISTING**

<u>Diameter</u>	<u>Grade 8.8 Bolt</u>
M6	9.5 Nm
M8	21.7 Nm
M10	43.4 Nm
M12	77.3 Nm
M16	189.8 Nm

**FOR TOWING PURPOSES ONLY**

For towing capacity details please refer to vehicle  
owner's manual or to the manufacturer. Overloading  
can void your warranties.

### STEP 1. Move wire loom Located on diff housing

- a. Remove wiring loom mounted on the diff housing.
- b. Drill a 8mm hole through the connector bracket from bottom to top surface which is welded on the diff housing as shown in Fig 1.



Fig 1

- c. Apply anti-rust or paint to newly drilled hole to prevent corrosion.
- d. Mount the wiring loom on the newly drilled top hole of the connector bracket.

**HAYMAN REESE**  
**PART No: 02866RW**  
**FORD RANGER / MAZDA BT-50 CAB CHASSIS STANDARD**

## INSTALLATION INSTRUCTIONS

PLEASE ENSURE THAT INSTRUCTIONS ARE UNDERSTOOD PRIOR TO FITMENT  
PLACE THESE INSTRUCTIONS IN THE VEHICLES GLOVEBOX AFTER INSTALLATION IS COMPLETED

### STEP 2. Towbar Fitment

**NOTE: Two persons required to lift towbar up to vehicle.**

- a. Insert the Nut plate (Item 4) into the passenger side of the Chassis Rail and align with the holes as shown in Fig 2 & 3, repeat with item 3 on the driver side.



Fig 2



Fig 3

- b. Loosely secure the towbar side arm to the Vehicle chassis rail via Nut plates using two M12 bolts and washers (item 5 & 7) on either side as shown in Fig 4.



Fig 4

**HAYMAN REESE**  
**PART No: 02866RW**  
**FORD RANGER / MAZDA BT-50 CAB CHASSIS STANDARD**

## INSTALLATION INSTRUCTIONS

PLEASE ENSURE THAT INSTRUCTIONS ARE UNDERSTOOD PRIOR TO FITMENT  
 PLACE THESE INSTRUCTIONS IN THE VEHICLES GLOVEBOX AFTER INSTALLATION IS COMPLETED

c. Loosely secure the towbar sidearm to the chassis rail using three sets of M12 bolts & washer (Items 5&7 ) as shown in Fig 5



Fig 5

**NOTE:** Use 1xM12 Nut & washer per side for the hole that doesn't have a captive nut.

**STEP 3.** Torque all bolts to recommended specification as per table on Page 3. Tighten Vertical M12 Bolts x2 per side first ten horizontal bolts.

**STEP 4.** Reconnect all electrical connections.

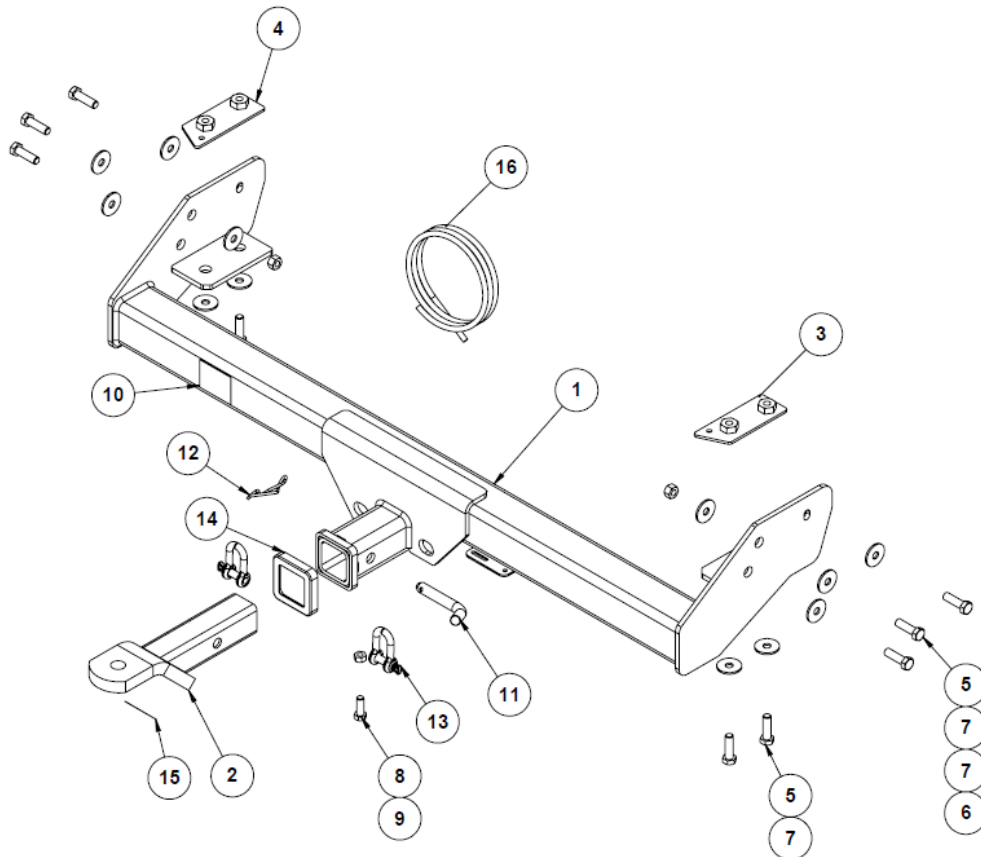
**STEP 5.** Reattach spare wheel on to Vehicle.

QTY	DESCRIPTION	ITEMS
1	Towbar	1
1	T.B.MOUNT 21161	2
1	NUT PLATE DRIVER SIDE	3
1	NUT PLATE PASSENGER SIDE	4
10	Bolt M12 x 30 x 1.75P GR 8.8	5
2	M12x1.75 HEX NUT	6
12	WASHER FT M12x37x3mm	7
1	M10 - 1.5 x 30mm BOLT	8
1	M10x1.5 HEX NUT PC8	9
1	COMPLIANCE PLATE	10
1	PULL PIN	11
1	SPRING COTTER PIN ASSEMBLY	12
2	D SHACKLE	13
1	H/BOX COLLAR COVER	14
1	HAYMAN REESE STICKER	15
1	WIRELOOM	16

**HAYMAN REESE**  
**PART No: 02866RW**  
**FORD RANGER / MAZDA BT-50 CAB CHASSIS STANDARD**

**INSTALLATION INSTRUCTIONS**

PLEASE ENSURE THAT INSTRUCTIONS ARE UNDERSTOOD PRIOR TO FITMENT  
PLACE THESE INSTRUCTIONS IN THE VEHICLES GLOVEBOX AFTER INSTALLATION IS COMPLETED



Rev: C

Page 6 of 6

27-11-12

**HAYMAN REESE**  
**PART No: 100713-WL**  
**MAZDA BT 50 / FORD T6 RANGER**  
**INSTALLATION INSTRUCTIONS**

PLEASE ENSURE THAT INSTRUCTIONS UNDERSTOOD PRIOR TO FITMENT

**Wiring Loom Installation Instructions**

**MAZDA BT 50 / FORD T6 RANGER**  
**Part No: 100713-WL**

**Tail Harness Length Require: 400mm**

**Mazda BT 50 – Pages: 2 – 4**  
**Ford T6 Ranger – Pages: 5- 7**

**If factory OEM RPA is fitted, Trouble Code will be logged  
if disabled.**

**Wiring Loom Installation Time: Approx. 20 Mins**

The following steps are for the Mazda BT 50 only. For the Ford T6 Ranger models, please proceed to page 5.

Issue Date 26-09-19

Page 1

Part No: 100713-WL

Hayman Reese (Cequent)  
PO Box 4050, Dandenong South VIC 3164  
Phone 1800 812 017 Email [info@haymanreese.com.au](mailto:info@haymanreese.com.au)

[www.haymanreese.com.au](http://www.haymanreese.com.au)



**HAYMAN REESE**  
**PART No: 100713-WL**  
**MAZDA BT 50 / FORD T6 RANGER**  
**INSTALLATION INSTRUCTIONS**

**PLEASE ENSURE THAT INSTRUCTIONS UNDERSTOOD PRIOR TO FITMENT**

1. In the engine bay, connect the supplied power harness (P/No: 04825) ring terminal (1) to the positive battery.
2. Route the power harness (2) down towards the LHS of the vehicle under carriage.



3. From underneath the vehicle, route the power harness (1) along the LHS of the chassis rail towards the rear of the vehicle.
4. Ensure that the power harness is secured with cable ties (not supplied).

**Note: When routing any harnesses underneath the vehicle, ensure to avoid all moving parts, sources of heat and sharp objects.**



5. On the LHS rear under carriage, locate and disconnect the 6-way tail light connectors (1) and connect the 6-way trailer patch (P/No: 100713-WL) (2) in between.



Issue Date 26-09-19

Page 2

Part No: 100713-WL

Hayman Reese (Cequent)  
PO Box 4050, Dandenong South VIC 3164  
Phone 1800 812 017 Email [info@haymanreese.com.au](mailto:info@haymanreese.com.au)

[www.haymanreese.com.au](http://www.haymanreese.com.au)





**HAYMAN REESE**  
**PART No: 100713-WL**  
**MAZDA BT 50 / FORD T6 RANGER**  
**INSTALLATION INSTRUCTIONS**

**PLEASE ENSURE THAT INSTRUCTIONS UNDERSTOOD PRIOR TO FITMENT**

6. Connect the power harness 1-way male connector (1) to the power harness 1-way female connector (2).



7. Route the trailer harness along the rear of the vehicle across to the RHS tail light connectors.



8. On the RHS of the rear under carriage, disconnect the 6-way tail light connectors (1) and connect the 6-way trailer patch connectors (2) in between.



Issue Date 26-09-19

Page 3

Part No: 100713-WL

Hayman Reese (Cequent)  
PO Box 4050, Dandenong South VIC 3164  
Phone 1800 812 017 Email [info@haymanreese.com.au](mailto:info@haymanreese.com.au)

[www.haymanreese.com.au](http://www.haymanreese.com.au)



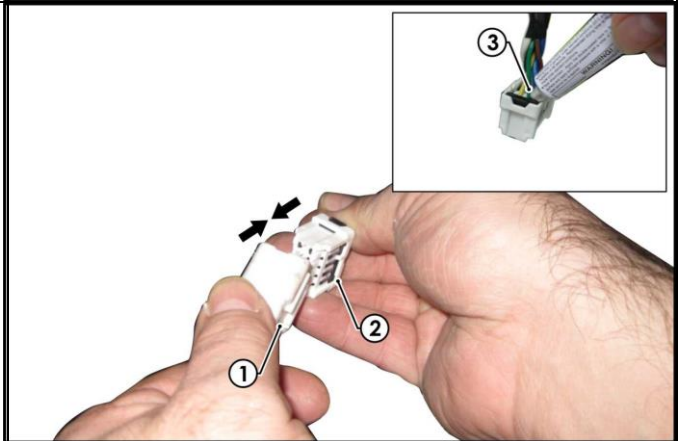
**HAYMAN REESE**  
**PART No: 100713-WL**  
**MAZDA BT 50 / FORD T6 RANGER**  
**INSTALLATION INSTRUCTIONS**

**PLEASE ENSURE THAT INSTRUCTIONS UNDERSTOOD PRIOR TO FITMENT**

9. Mount the tail harness socket (1) towbar mounting bracket using M4 fasteners (not supplied).
10. Route the tail harness (tail length 400mm) (2) along the towbar, towards the trailer patch.



11. Connect the trailer harness 8-way connector (1) to the tail light harness mating connector (2).
12. Waterproof the connectors using electrical grease (3) or silicone.



13. Test trailer harness function using trailer light board or multimeter.
14. Secure all harnesses using cable ties (not supplied).
15. Re-fit all removed parts and secure all fasteners ensuring there are no squeaks or rattles.
16. Please place the fitting instructions in the glove box after installation.

Issue Date 26-09-19

Page 4

Part No: 100713-WL

Hayman Reese (Cequent)  
PO Box 4050, Dandenong South VIC 3164  
Phone 1800 812 017 Email [info@haymanreese.com.au](mailto:info@haymanreese.com.au)

[www.haymanreese.com.au](http://www.haymanreese.com.au)



**HAYMAN REESE**  
**PART No: 100713-WL**  
**MAZDA BT 50 / FORD T6 RANGER**  
**INSTALLATION INSTRUCTIONS**

PLEASE ENSURE THAT INSTRUCTIONS UNDERSTOOD PRIOR TO FITMENT

**The following steps are for the Ford T6 Ranger only. For Mazda BT 50 models, please refer to page 2.**

1. In the engine bay, connect the supplied power harness (P/No: 04825) ring terminal (1) to the positive battery.
2. Route the power harness (2) down towards the LHS of the vehicle under carriage.

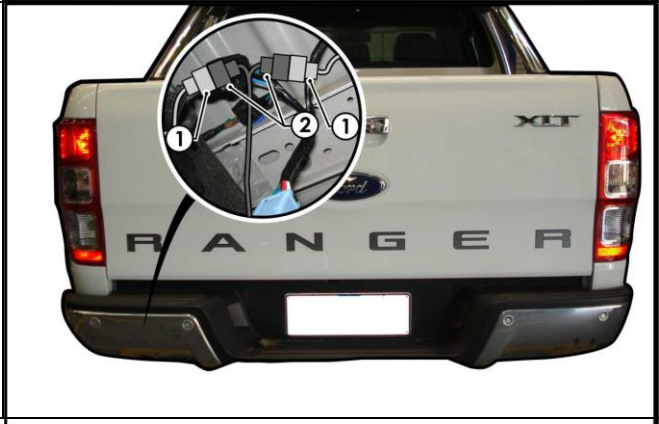


3. From underneath the vehicle, route the power harness (1) along the LHS of the chassis rail towards the rear of the vehicle.
4. Ensure that the power harness is secured with cable ties (not supplied).

**Note: When routing any harnesses underneath the vehicle, ensure to avoid all moving parts, sources of heat and sharp objects.**



5. On the LHS rear under carriage, locate and disconnect the 6-way taillight connectors (1) and connect the 6-way trailer patch (P/No: 100713-WL) (2) in between.



Issue Date 26-09-19

Page 5

Part No: 100713-WL

Hayman Reese (Cequent)  
PO Box 4050, Dandenong South VIC 3164  
Phone 1800 812 017 Email [info@haymanreese.com.au](mailto:info@haymanreese.com.au)

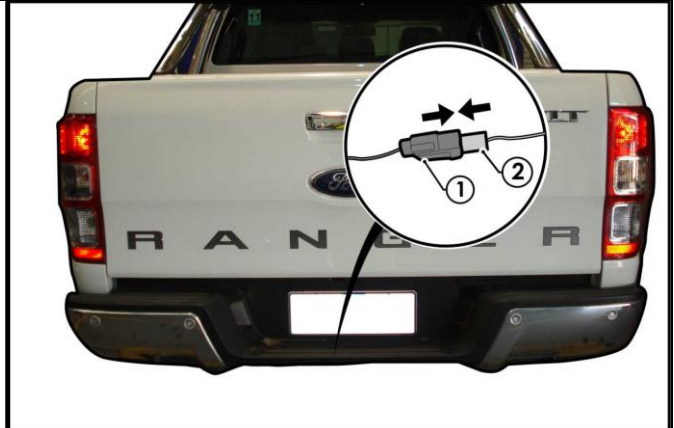
[www.haymanreese.com.au](http://www.haymanreese.com.au)



**HAYMAN REESE**  
**PART No: 100713-WL**  
**MAZDA BT 50 / FORD T6 RANGER**  
**INSTALLATION INSTRUCTIONS**

**PLEASE ENSURE THAT INSTRUCTIONS UNDERSTOOD PRIOR TO FITMENT**

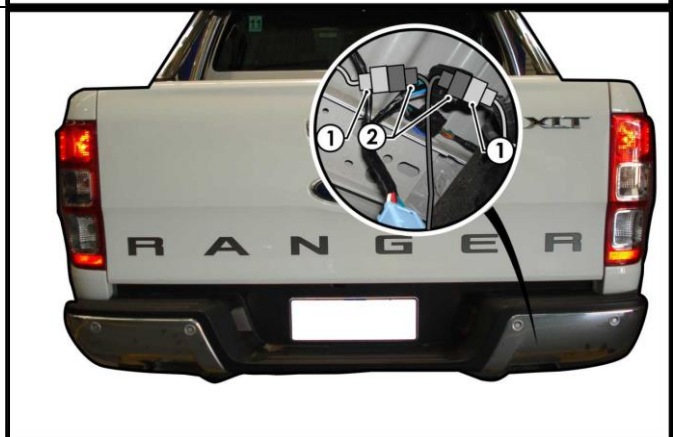
6. Connect the power harness 1-way male connector (1) to the power harness 1-way female connector (2).



7. Route the trailer harness along the rear of the vehicle across to the RHS taillight connectors.



8. On the RHS of the rear under carriage, disconnect the 6-way taillight connectors (1) and connect the 6-way trailer patch connectors (2) in between.



Issue Date 26-09-19

Page 6

Part No: 100713-WL

Hayman Reese (Cequent)  
PO Box 4050, Dandenong South VIC 3164  
Phone 1800 812 017 Email [info@haymanreese.com.au](mailto:info@haymanreese.com.au)

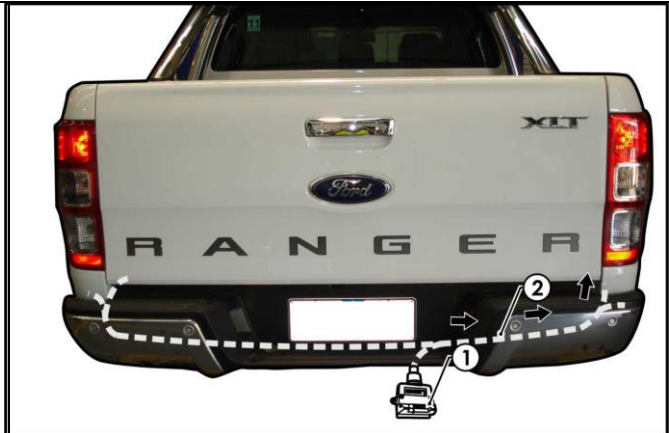
[www.haymanreese.com.au](http://www.haymanreese.com.au)



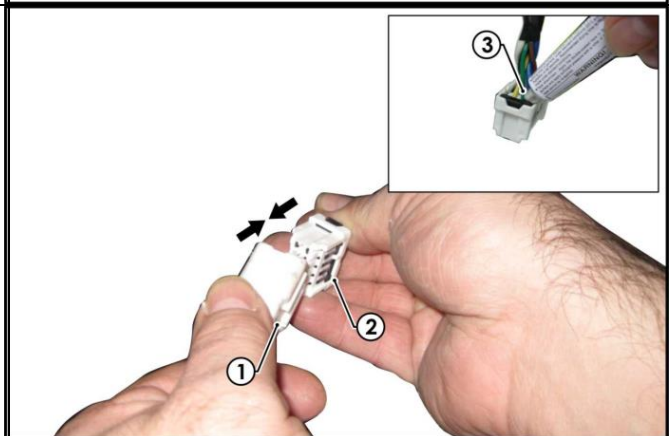
**HAYMAN REESE**  
**PART No: 100713-WL**  
**MAZDA BT 50 / FORD T6 RANGER**  
**INSTALLATION INSTRUCTIONS**

**PLEASE ENSURE THAT INSTRUCTIONS UNDERSTOOD PRIOR TO FITMENT**

9. Mount the Tail Harness socket (1) towbar mounting bracket using M4 fasteners (not supplied).
10. Route the tail harness (tail length 400mm)(2) along the towbar towards the trailer patch.



11. Connect the trailer harness 8-way connector (1) to the tail light harness mating connector (2).
12. Waterproof the connectors using electrical grease (3) or silicone.



13. Test trailer harness function using a trailer light board or multimeter.
14. Secure all harnesses using cable ties (not supplied).
15. Re-fit all removed parts and secure all fasteners ensuring there are no squeaks or rattles.
16. Please place the fitting instructions in the glove box after installation.

Issue Date 26-09-19

Page 7

Part No: 100713-WL

Hayman Reese (Cequent)  
PO Box 4050, Dandenong South VIC 3164  
Phone 1800 812 017 Email [info@haymanreese.com.au](mailto:info@haymanreese.com.au)

[www.haymanreese.com.au](http://www.haymanreese.com.au)





# FITTING INSTRUCTIONS

## Smart Pin (55070BL)

• These fitting instructions are supplied to ensure understanding of how the SMART PIN should be fitted and used correctly.

• Once installed, we recommend **ALL** instructions are kept and placed in the vehicle glove box.

**NOTE: Routine maintenance and inspection of the towbar & SMART PIN is required. Regularly inspect for wear and check the tightness of the SMART PIN NUT. Follow instructions below to retighten the nut when necessary.**

**\*Do not tow with your vehicle if the R CLIP or the SMART PIN NUT is loose or missing. Replacement parts are available from your Hayman Reese Distributor.**

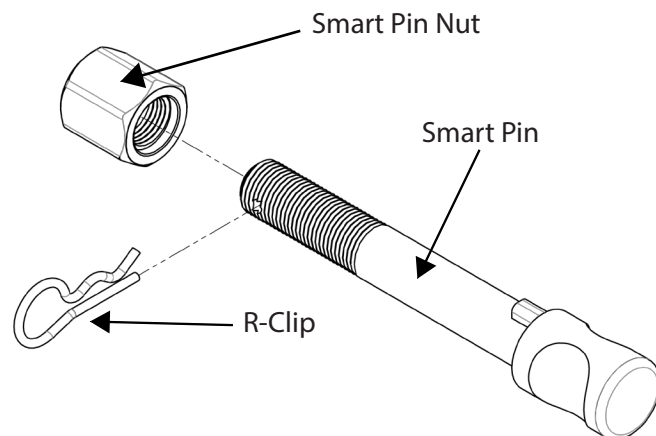
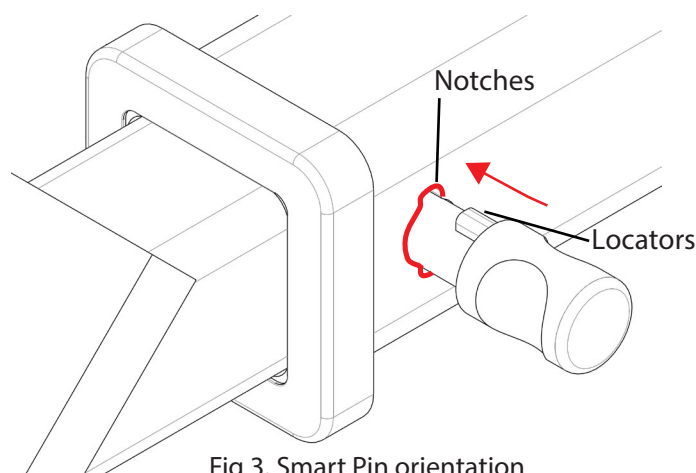
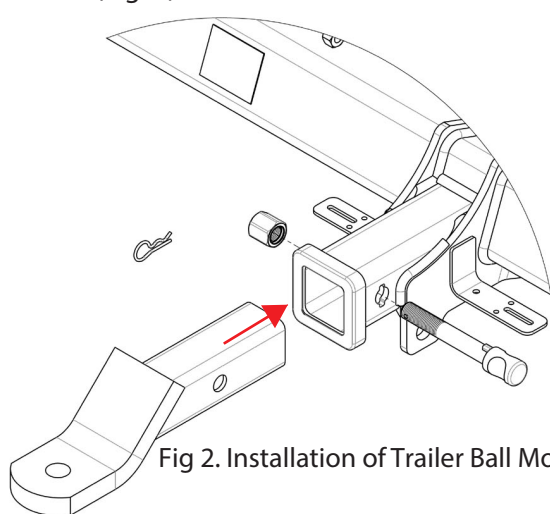


Fig 1. Smart Pin assembly

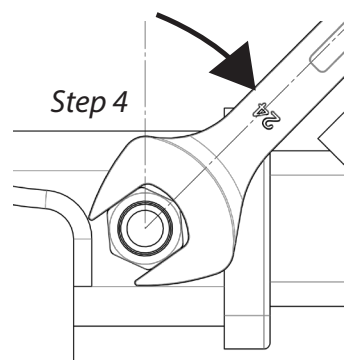
**STEP 1** Insert Trailer Ball Mount (TBM) into towbar HITCHBOX, aligning hole in TBM SHANK with hole in HITCHBOX (Fig. 2).



**STEP 2** Insert SMART PIN through hole in HITCHBOX and hole in TBM SHANK; ensure the LOCATORS are inserted into the NOTCHES in the HITCHBOX (Fig. 3).

**STEP 3** Screw SMART PIN NUT onto SMART PIN; tighten SMART PIN NUT until finger tight, ensuring TBM is restrained from movement.

**STEP 4** Tighten SMART PIN NUT by turning nut a further 1/8th of a turn in the clockwise direction using a 24mm spanner (Fig 4).



**STEP 5** Install SMART PIN R CLIP through the hole on the SMART PIN (Fig. 1).

