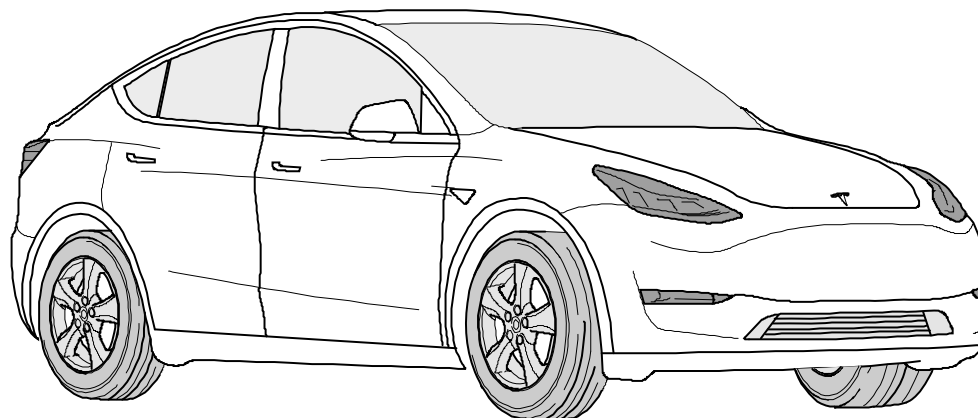




TOWBAR INSTALLATION INSTRUCTIONS

PART NUMBER 03449RW

TESLA MODEL 3 CL4



#

PRODUCT DETAILS:

Part Number:	03449RW	Maximum Towing Braked:	1000	kg
ECU Number:	04844	Maximum Towing Unbraked:	750	kg
Tail Harness Length Required:	1800 mm	Maximum Static Ball Load:	100	kg
TBM/Lug Part Number:	21288			
Wiring Part Number:	102821-WL			

FITTING DETAILS:

Towbar Installation Time:	60 Mins.	Hayman Reese SmartCODE Solution Required:	NO
Wiring Installation Time:	40 Mins.	RPA Disable/Other:	NO
Total Installation Time:	100 Mins.		
Bumper Cut Required:	Yes		

Note:

- RPA disable is access via infotainment.
- All vehicle connections must be connected prior to testing.



WARNING

Electrical vehicles include a high voltage battery, which can lead to property damage and personal injury if handled incorrectly.
DO NOT unplug any orange high voltage cables unless the vehicles have been properly isolated by a high voltage trained technician. Series injury or death many occur.



TOWBAR INSTALLATION INSTRUCTIONS

PART NUMBER 03449RW

TESLA MODEL 3 CL4

ENSURE THAT INSTRUCTIONS ARE UNDERSTOOD PRIOR TO FITMENT.

i BEFORE YOU START:

Hayman Reese recommends that instructions are read completely prior to fitment. Check all hardware items have been included refer to assembly diagram. Please ensure this towbar is only fitted to vehicle models as per Hayman Reese application guide (www.haymanreese.com.au).

Bumper Cuts



Vehicle and bumper variations can and do occur during vehicle manufacture after initial towbar design. Fitment of towbar to vehicle and accuracy of bumper cut must be assessed prior to any bumper modifications made. Incorrect bumper cuts are not covered under Hayman Reese warranty.

NOTE: Bumper cuts need to be approached with care, refer to notes below.

- Bumper centreline – where the centreline of the bumper needs to be determined, the installer must assess centre point by measurement of bumper width or determining two symmetrical reference points to give centreline.
- Bumper edge – To assist with accurate bumper cut measurement, reference to the start of the bumper edge is now being commonly used.
 - Measure from bottom edge along bumper and around corner to the 70 mm point (Figure 1).
 - Do not measure from visible bumper front of corner, upwards (Figure 2).

CORRECT

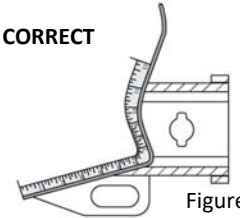


Figure 1

INCORRECT

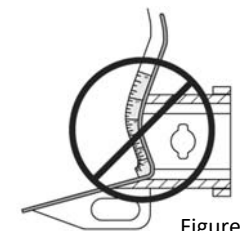


Figure 2

Drilling

- For any required drilling during installation, ensure that the area is clear of fuel, electrical & other components that may be damaged.
- All holes drilled into the body panels shall have all burrs & swarf removed then coated with a suitable rust preventative paint.

Bolts/Fasteners

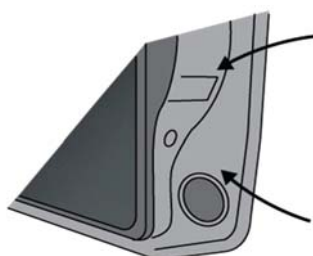
- Ensure that all hardware is fastened to correct torque as specified in this fitting instruction.
- All fasteners supplied with this product are used to achieve a specified clamp loading. If replacement is required ensure that fasteners of the same grade and class are used.



NOTE: Achieving correct torque is critical to proper installation and responsibility of the installer. Towbar failures attributed to tension issues from over tightening or under tightening are not covered by Hayman Reese warranty.

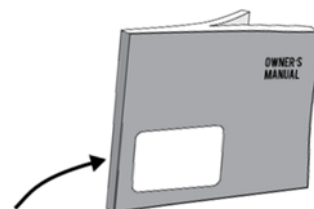
Product Labels

- a. Towbar load rating sticker provided with this product shall be conspicuously located on inside rear end of the driver's door.
- b. Powertrain Control Module (PCM)/Body Control Module (BCM) upgrade warning label will be provided in towbar kit for vehicles as required. Affix warning label in door and owner's handbook.



Place **Load Rating sticker** inside driver's door here

Place **Vehicle PCM/ BCM upgrade warning label** in door AND on front cover of owner's service handbook



WARNING:

Do not, drill, cut, weld or otherwise modify the towbar.

FOR TOWING PURPOSES ONLY - This towbar is designed and tested by Hayman Reese to adhere to ADR 62/02 which provides only for the expected load demands of towing.

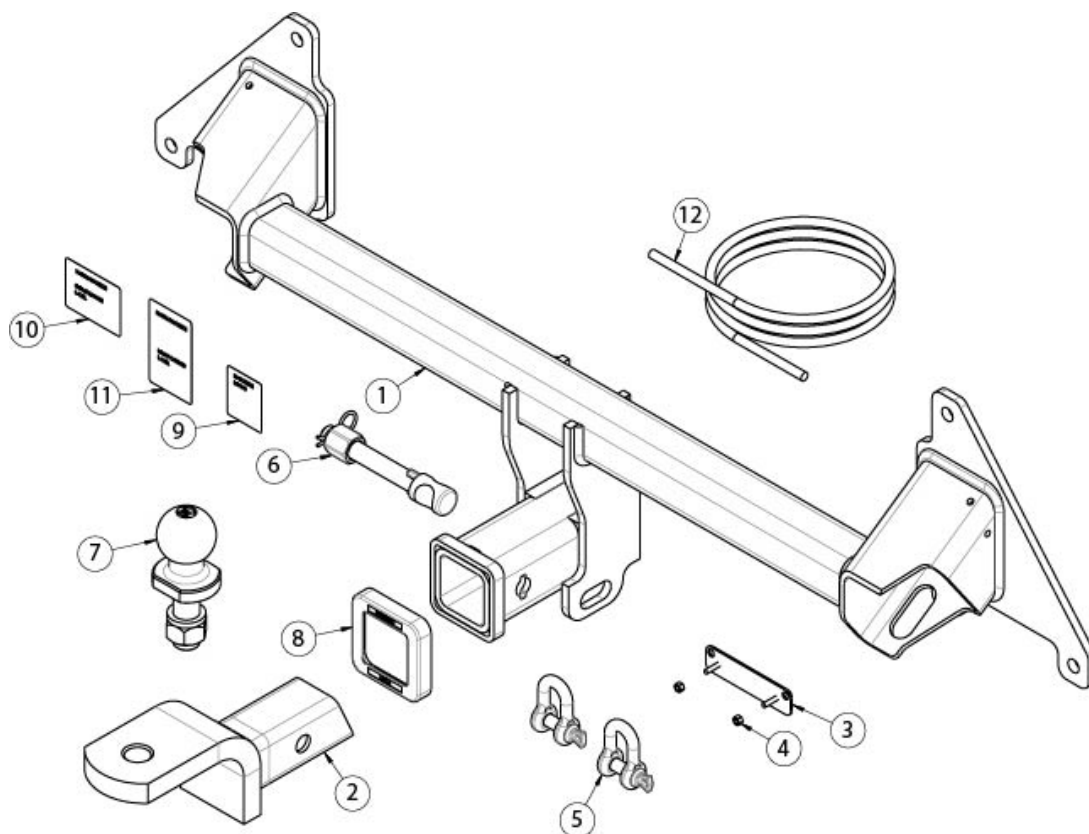


TOWBAR INSTALLATION INSTRUCTIONS

PART NUMBER 03449RW

TESLA MODEL 3 CL4

i TOWBAR ASSEMBLY DIAGRAM



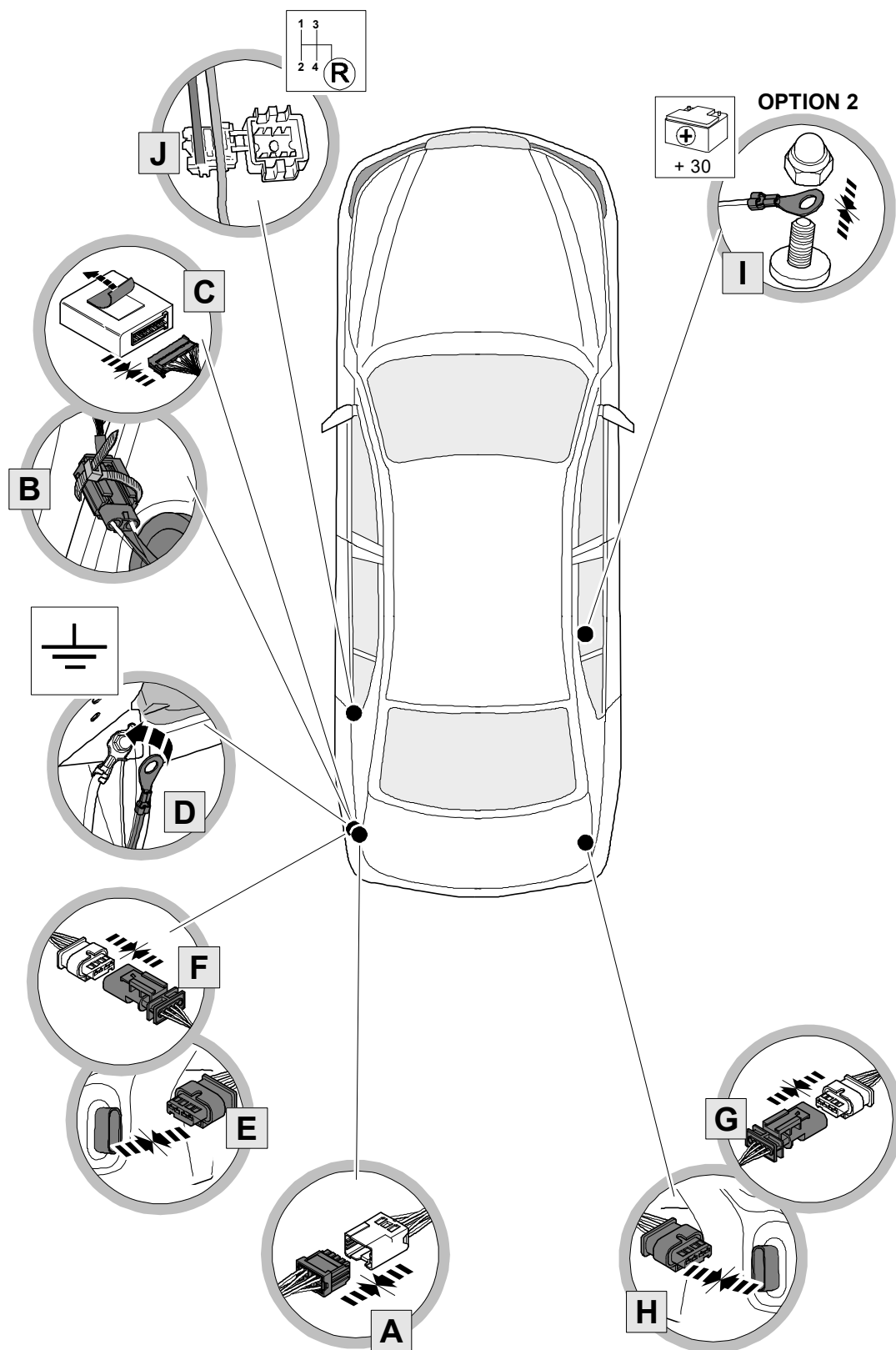
ITEM	DESCRIPTION	QTY
1	TESLA MODEL 3 WELDED ASSY	1
2	TRAILER BALL MOUNT	1
3	PLUG BRACKET	1
4	NUT NYLOC HEX HD M4x0.7P	2
5	"D" SHACKLE 10mm	2
6	SMART PIN GOLD	1
7	TOWBALL 50mm	1
8	HITCH BOX COLLAR COVER	1
9	HAYMAN REESE LOGO STICKER	1
10	COMPLIANCE LABEL	1
11	LOAD RATING LABEL	1
12	WIRING LOOM	1



TOWBAR INSTALLATION INSTRUCTIONS

PART NUMBER 03449RW

TESLA MODEL 3 CL4



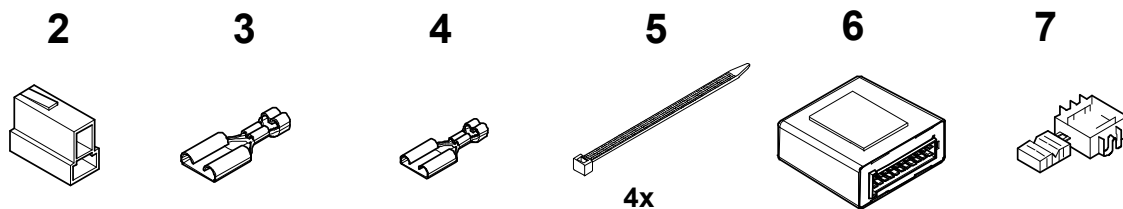
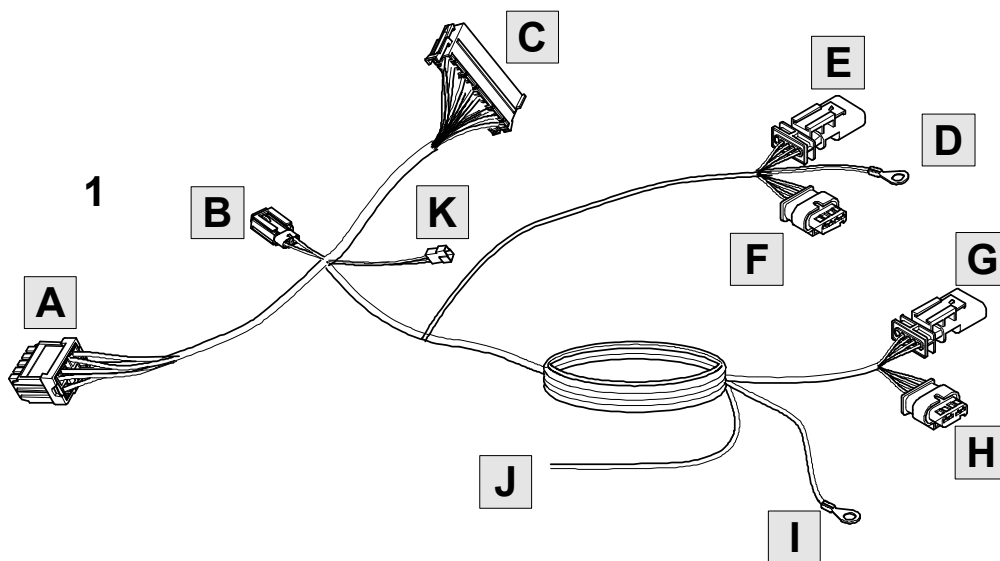


TOWBAR INSTALLATION INSTRUCTIONS

PART NUMBER 03449RW

TESLA MODEL 3 CL4

i WIRING ASSEMBLY DIAGRAM



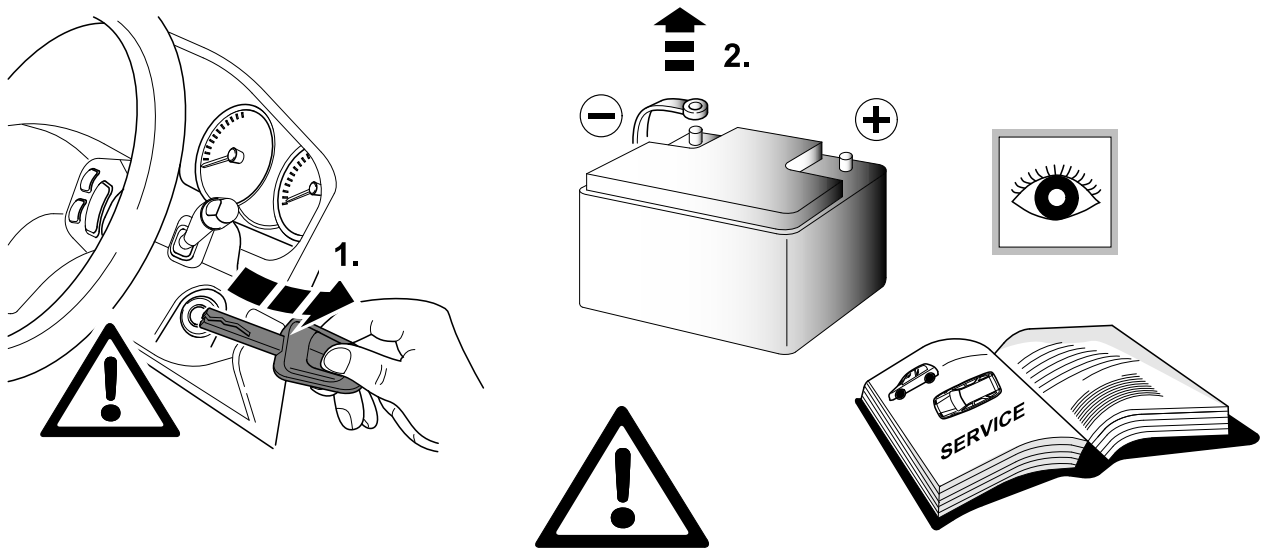
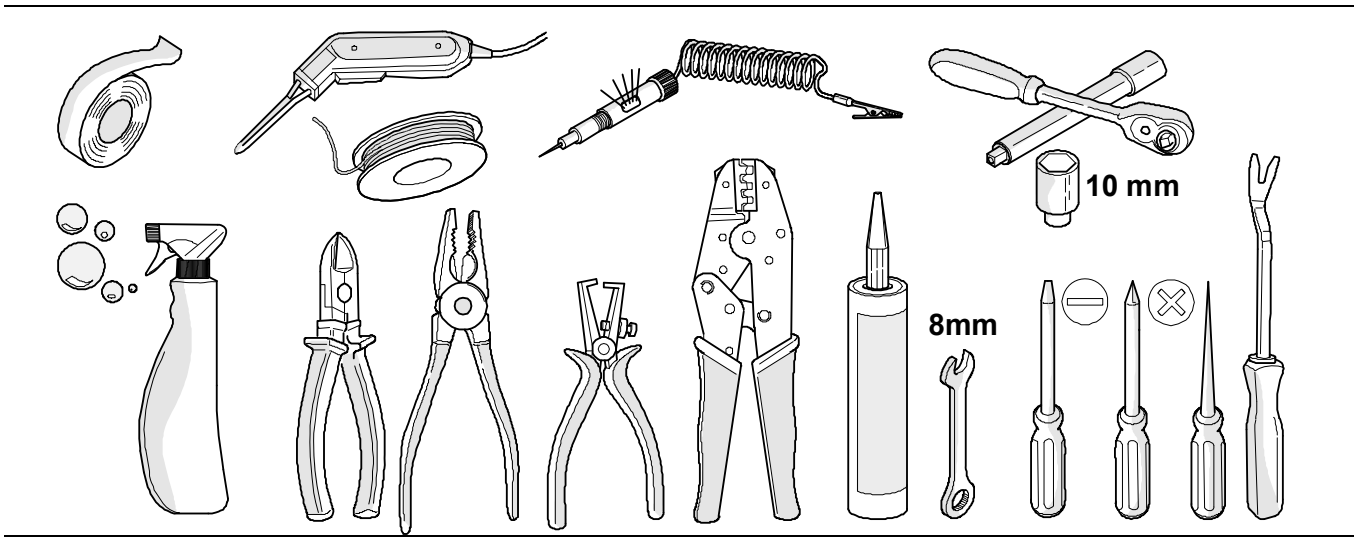
ITEM	DESCRIPTION	QTY
1	MAIN WIRE HARNESS	1
2	HOUSING 082 NT 6.3MM	1
3	CONTACT 6,30MM/1,00	1
4	CONTACT 6,30MM/2,50	1
5	TIE STRAPS	4
6	TRAILER CONTROL MODUEL 12V (04844)	1
7	SPLICE	1



TOWBAR INSTALLATION INSTRUCTIONS

PART NUMBER 03449RW

TESLA MODEL 3 CL4



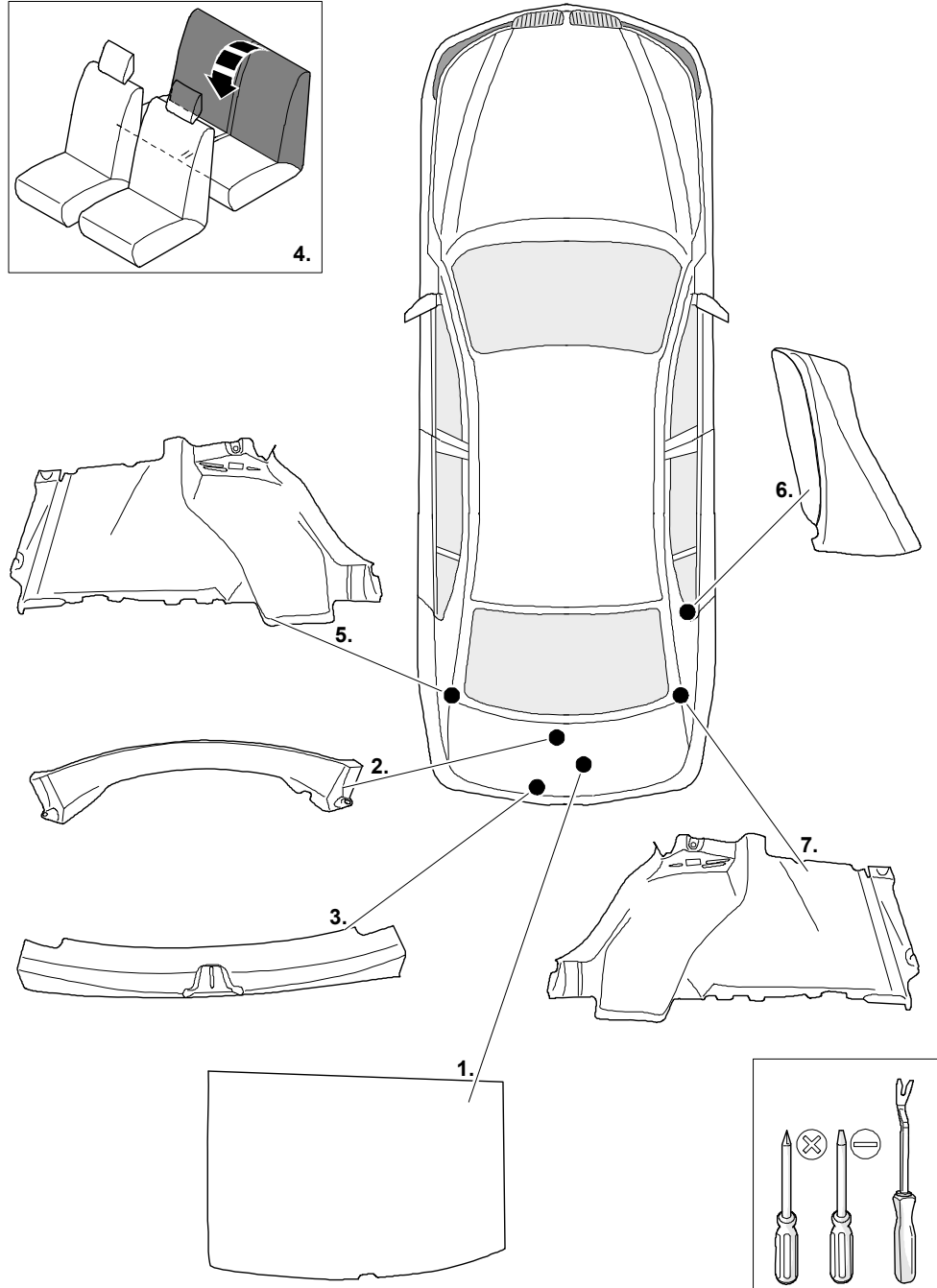


TOWBAR INSTALLATION INSTRUCTIONS

PART NUMBER 03449RW

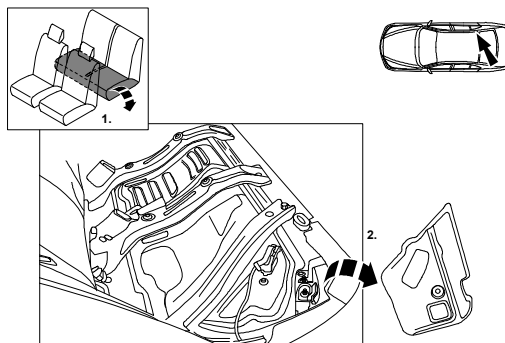
TESLA MODEL 3 CL4

Interior panel removal Steps.



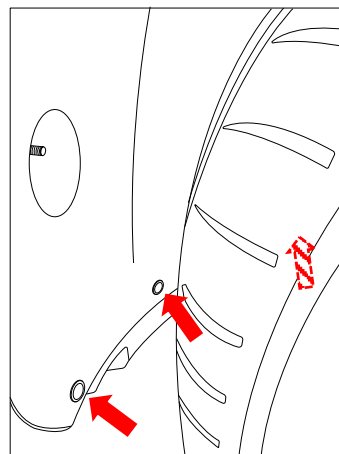
1. Remove the interior trims as per steps on page (7).
2. Remove the lower rear seat cushion.

Note: This is to expose the battery post which is used in step 29.



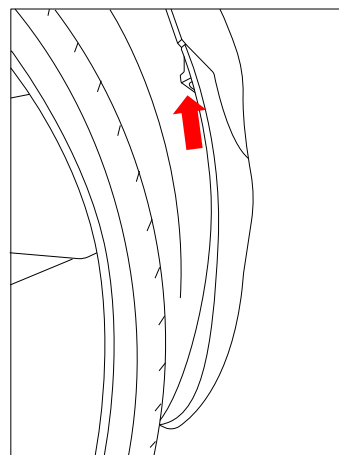
3. In wheel arch remove 3 x scrivenets along the bottom of the lining.

Repeat for other side.



4. Peel back wheel arch lining and remove the exposed 1x Torx securing bumper.

Repeat for other side.



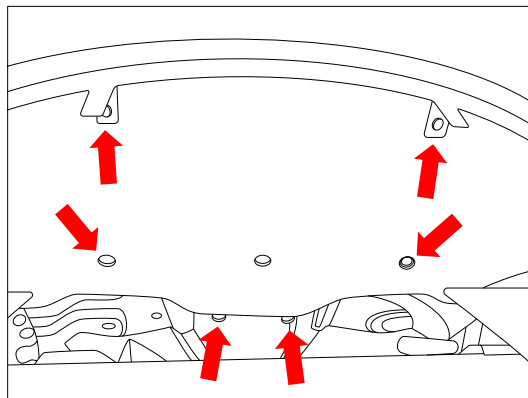


TOWBAR INSTALLATION INSTRUCTIONS

PART NUMBER 03449RW

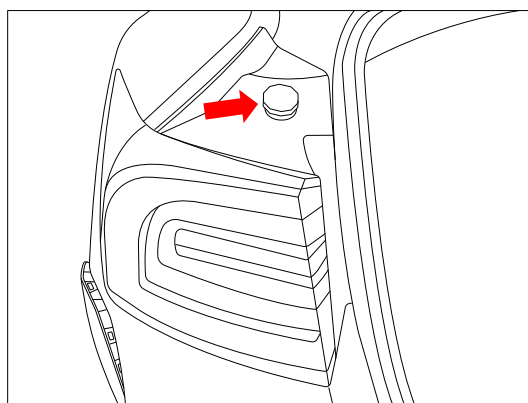
TESLA MODEL 3 CL4

5. Under bumper, unclip the 2x flaps and remove the 6x screws securing the underbody protector.



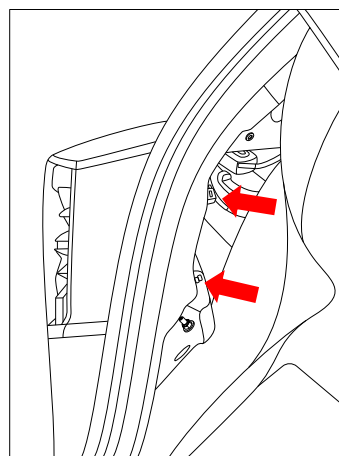
6. Open boot and unscrew to remove the exposed boot stop.

Repeat for other side.



7. In the luggage compartment, remove the 2x nuts on studs securing the taillight.

Repeat for other side.





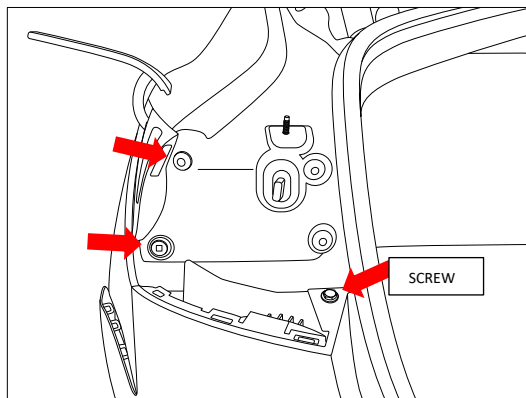
TOWBAR INSTALLATION INSTRUCTIONS

PART NUMBER 03449RW

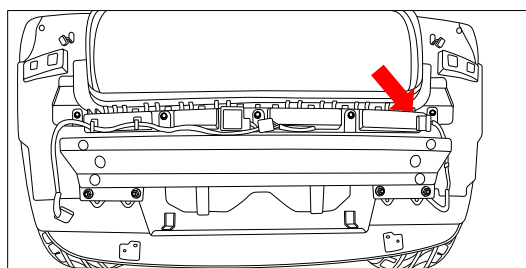
TESLA MODEL 3 CL4

- Remove taillight by pulling rearward (there are 2x retaining pins in plugs as indicated in the image). Disconnect taillight from the wiring plug and set aside.
- In the taillight cavity, remove the exposed 1x screw.

Repeat steps 6 and 7 for other side.

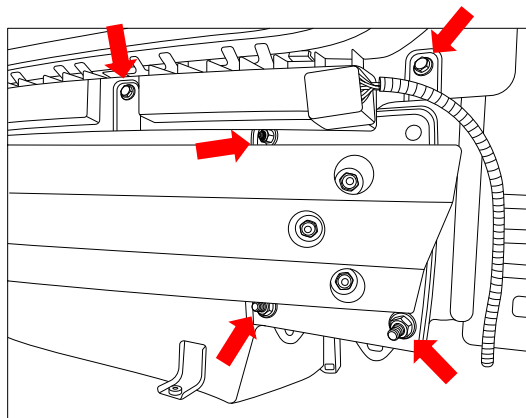


- Peel bumper away from the sides and remove, along with the underbody protector, from vehicle and set aside. Ensure to disconnect the wiring loom located on the right side.



- Remove and discard the impact beam secured with 3x flange nuts per side. To assist removal, loosen off the 5x screws running across the plastic bumper retainer.

Retain the flange nuts for towbar installation.





TOWBAR INSTALLATION INSTRUCTIONS

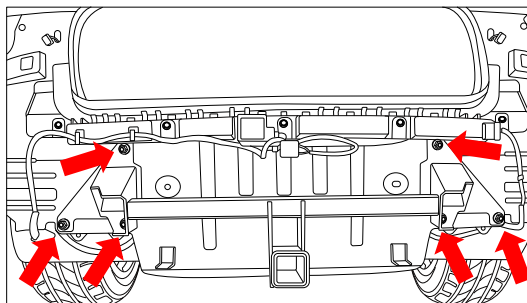
PART NUMBER 03449RW

TESLA MODEL 3 CL4

12. Position towbar onto the studs and secure with 3x flange nuts per side.

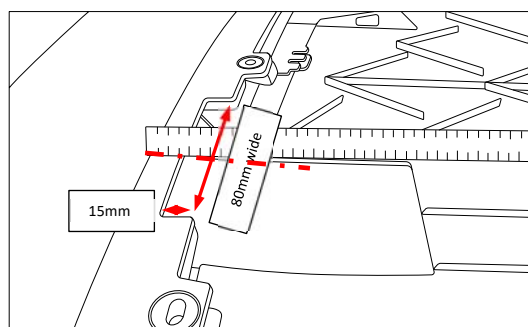
Torque nuts to 62Nm.

13. Re-secure the plastic bumper retainer.



14. For painted section of bumper. (Inside section)

On the inside of the bumper, identify the centre line and mark 80mm wide and 15mm from the inner bend on the painted flat section. Cut out this section

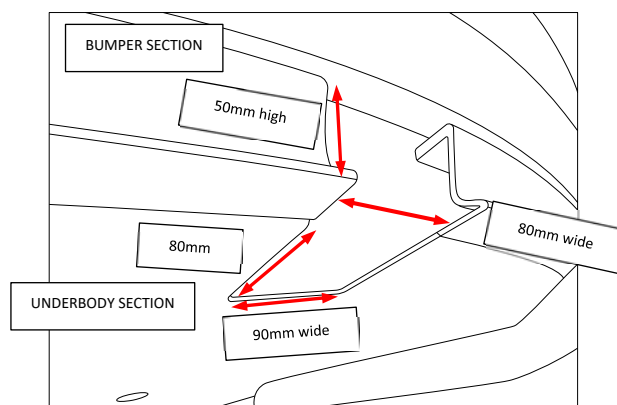


From inside the bumper

15. For remainder of bumper and Underbody protector cut.

Identify the centre line of the underbody protector. Measure and mark out a section 80mm long from the bottom edge of the under-body protector and 90mm wide (45mm either side of the bumper centreline). Mark out 80mm wide on the bumper section and for the height, up to the painted section (about 50mm). Proceed to cut out the marked-out area.

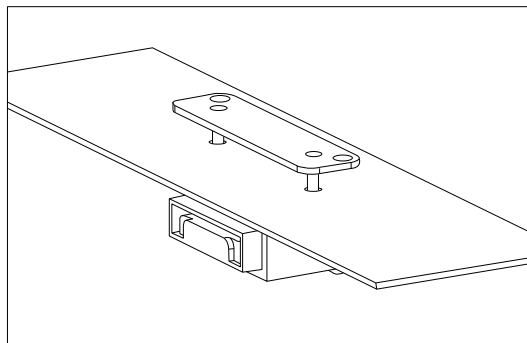
Note: The vertical section of the painted bumper must not be cut.



Underbody protector

16. For the plug bracket.

Find an appropriate position on the under-body protector, mark out and drill 2 x $\varnothing 5$ mm holes 69mm apart to support plug bracket.



IMPORTANT

Due to possible vehicle variations, always confirm any noted vehicle colour wires with a multi-meter to ensure the correct function is identified before soldering or scotch locking. For vehicle wires denoted with two colours (example; RED/GREEN) the first colour will always be the main wire colour while the second colour is the thinner trace colour on the wire.



Warning

There are orange high voltages wire in this area check before drilling.

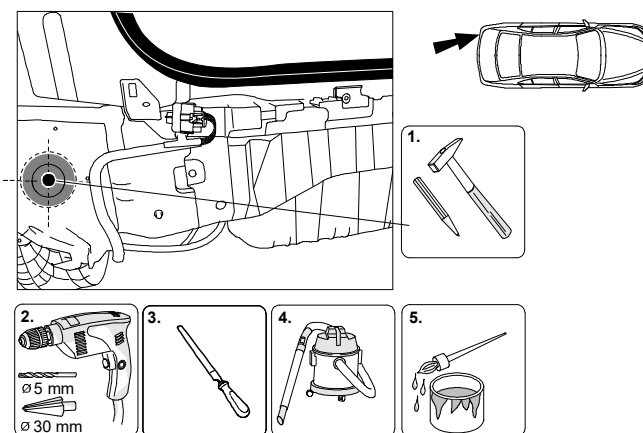
Note: If there is unused grommet.

17. Using a step drill; drill out to $\varnothing 30$ mm hole.

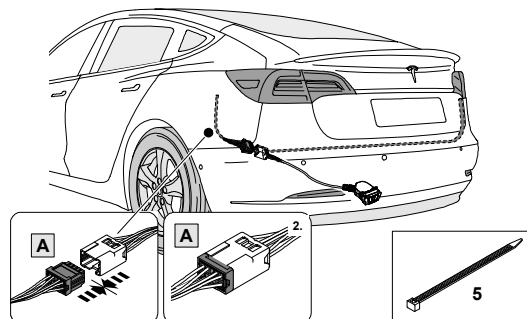
Note: If there is no grommet available.

18. Find a suitable location on the LHS sheet metal using a step drill; drill a $\varnothing 30$ mm hole.

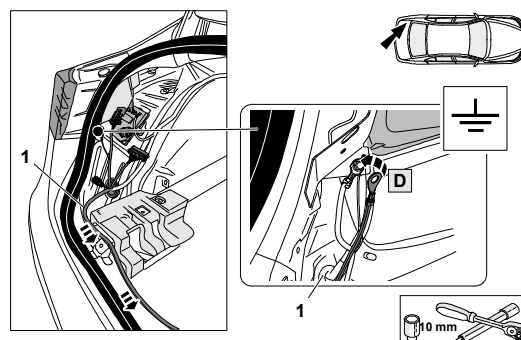
Note: File any rough or sharp edges and spray rust inhibitor.



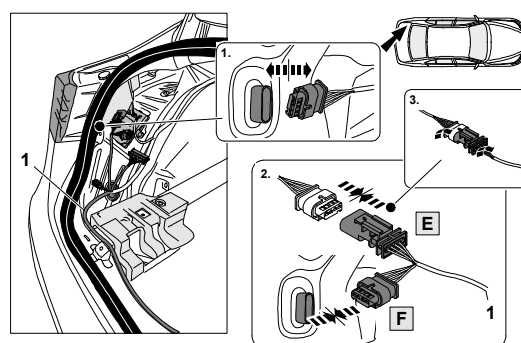
19. Feed the 1800 tail connector through the previously drilled hole, slide the grommet to desired position allowing enough length to mount the trailer plug.
20. Secure the grommet in place using a cable tie.
21. Connect the tail connector to trailer patch mating connector (A).



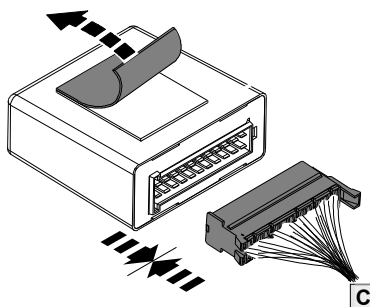
22. Connect the trailer patch ring terminal (D) to factory ground point.



23. Connect the LHS trailer patch tail light connector (E) to vehicle mating connector.

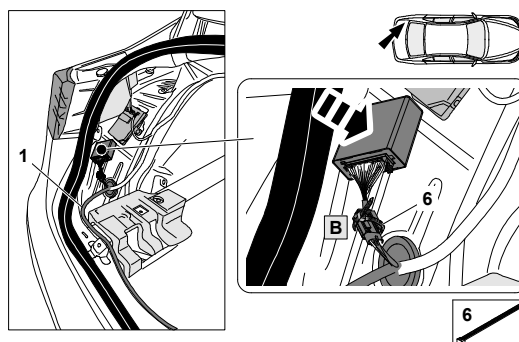


24. Connect trailer patch ECU connector (C) to ECU (6).
25. Peel the backing tape from the trailer module.

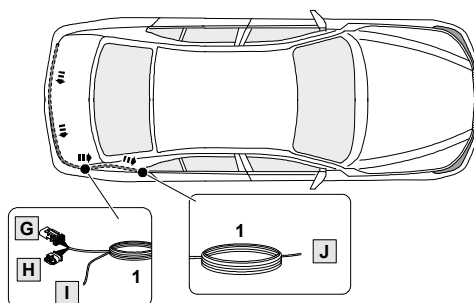


26. Place the ECU to vehicle sheet metal.

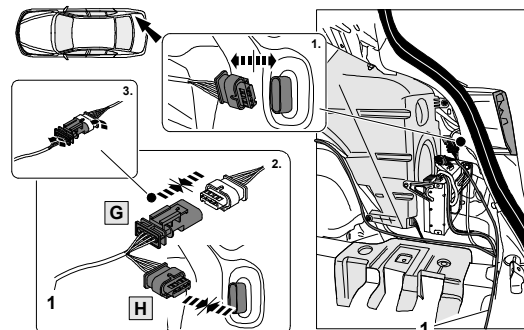
Apply pressure ensuring good adhesion.



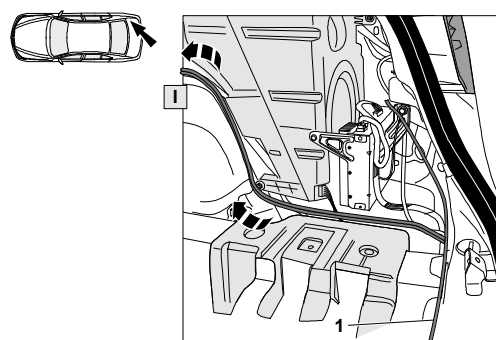
27. Route the trailer patch towards the RHS of the vehicle.



28. Connect the RHS trailer patch taillight connector (G) to vehicle mating connector.



29. Route trailer patch power ring terminal (I) towards the battery post. Rear RHS passenger seat.

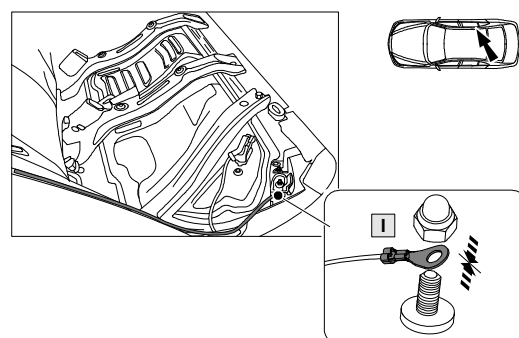


30. Connect trailer patch ring terminal (I) to positive battery terminal post.



Warning

Note: Care to be taken when securing the terminal not to short out positive post.





TOWBAR INSTALLATION INSTRUCTIONS

PART NUMBER 03449RW

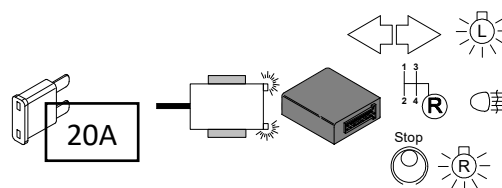
TESLA MODEL 3 CL4

31. Secure harness using cable ties.
32. Refit bumper and taillights before testing trailer functionality.

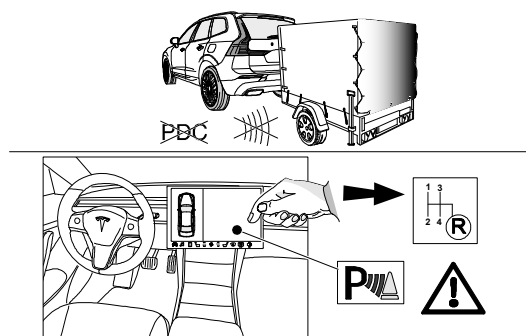
Failure to comply will result in the taillight circuit will not operate for 30min.

Warning

33. Used fuse for a module protection is 20A.



34. RPA disable is accessed via infotainment.





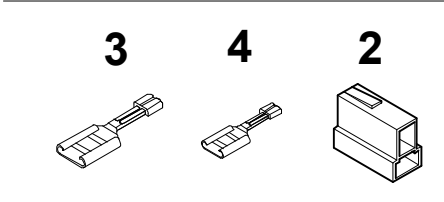
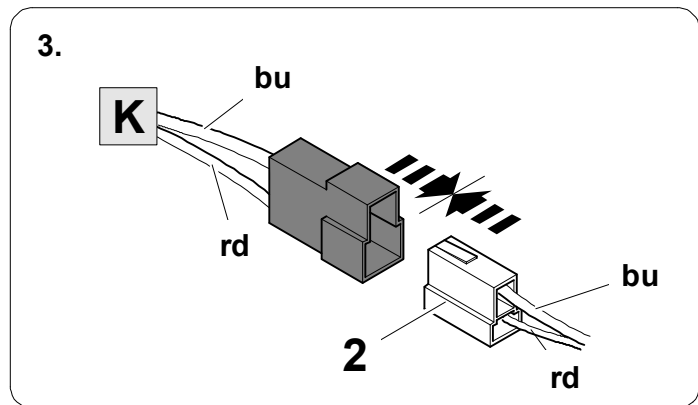
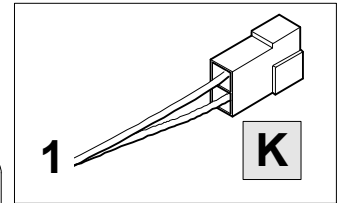
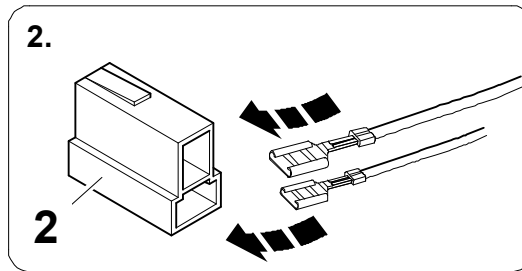
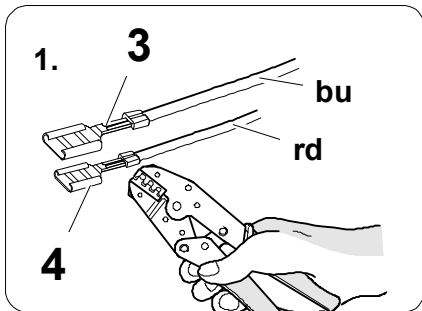
TOWBAR INSTALLATION INSTRUCTIONS

PART NUMBER 03449RW

TESLA MODEL 3 CL4



Trailer Brake Preparation





CUSTOMER INFORMATION

PLACE THESE INSTRUCTIONS IN THE
VEHICLE'S GLOVEBOX AFTER INSTALLATION

**THANK YOU FOR PURCHASING HAYMAN REESE.
WITH CORRECT MAINTENANCE AND CARE THIS PRODUCT WILL PROVIDE A
LIFETIME OF TROUBLE-FREE OPERATION.**

i TOWBAR MAINTENANCE AND CARE:

1. Hayman Reese recommend that the towbar LUG or TBM (tow ball Mount) Pull Pin and R-clip are removed and stored when not in use. Removal of LUG or TBM (tow ball mount) is advisable when not in use to assist with any of the following.
 - Ensure rear number plate is not obscured.
 - Allow maximum available departure angle and prevent any potential interference.
 - Prevent possible interference with vehicles reverse sensors or camera detecting a tow ball mount as an obstruction during reversing.
 - Removes towball mount as an obstruction for when moving around the rear of the vehicle.
2. Hayman Reese recommends routine inspection of your towbar to ensure trouble free towing.
 - Bolt security and tension should be regularly inspected and checked for correct tension. Replace any worn or defective parts with suitable grade & class fasteners. Inspection should be requested to coincide with vehicle major services.
3. It is the owner's responsibility to ensure towing and down ball weight capacities of the towing vehicle are not exceeded.
 - Towing and down ball weights allowable may differ according to model variations. Please refer to owner's manual or vehicle dealer to confirm exact rating for your vehicle model variant.
 - It is not uncommon for the vehicle tow rating to differ from the towbar rating. When this occurs, the lesser rating must be adhered to.
 - For vehicles fitted with enhanced vehicle functions that may be altered/changed when towing i.e Trailer sway mitigation, blind spot detection, adaptive cruise control etc. Please consult owner's manual to understand changes enabled when towing and after towing.

i WARRANTY INFORMATION:

Hayman Reese Towbars are covered by a Lifetime Warranty.

Our goods come with guarantees that cannot be excluded under the Australian Consumer Law. You are entitled to a replacement or refund for a major failure and for compensation for any other reasonably foreseeable loss or damage. You are also entitled to have the goods repaired or replaced if the goods fail to be of acceptable quality and the failure does not amount to a major failure.

For further details please visit www.haymanreese.com.au/warranty or contact customer service on 1800 812 017 or info@haymanreese.com.au.



CUSTOMER INFORMATION

PLACE THESE INSTRUCTIONS IN THE VEHICLE'S GLOVEBOX AFTER INSTALLATION

HAYMAN REESE SMART PIN

Your Hayman Reese towbar is equipped with Smart Pin technology to help reduce towbar tongue rattle in most driving conditions. Please ensure below instructions are understood and routine maintenance is carried out to ensure best towing experience.



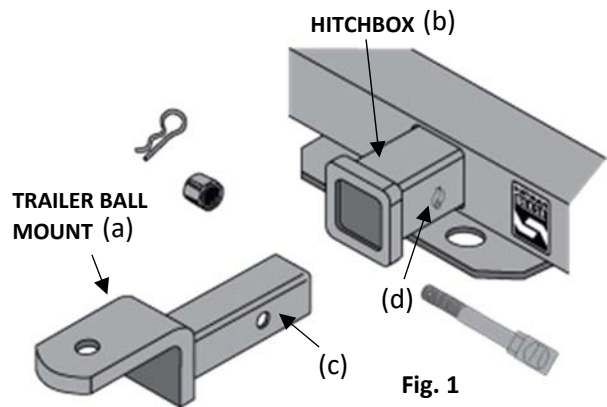
Regularly inspect for wear and check the tightness of the Smart Pin Nut. Follow instructions below to re-tighten the nut as necessary when movement and noise in the tow ball mount is noted.

- Before towing, ensure R-Clip is properly installed and Smart pin nut is installed and tensioned. Replacement parts are available from your Hayman Reese Distributor.

TOWBALL MOUNT REMOVAL/INSTALLATION

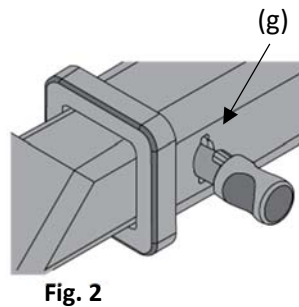
STEP 1

Insert Trailer Ball Mount (TBM) (a) into towbar hitchbox (b), aligning hole in TBM shank (c) with hole in hitchbox (d) (Fig. 1)



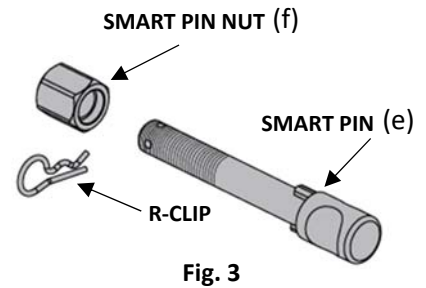
STEP 2

Insert Smart Pin (e) through hole in hitchbox and hole in TBM shank (g); ensure the locators are inserted into the notches in the hitchbox (Fig. 2)



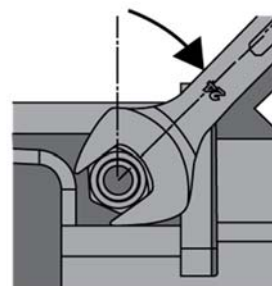
STEP 3

Screw Smart Pin Nut (f) onto Smart Pin (g); tighten Smart Pin Nut until finger tight, ensuring TBM is restrained from up and down movement.



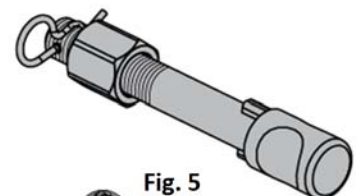
STEP 4

Tighten Smart Pin Nut by turning nut a further 1/8th of a turn in the clockwise direction using a 24mm spanner (Fig. 4).



STEP 5

Install Smart Pin R-Clip through the hole that provides best clearance or easiest access. (Fig. 5)



STEP 6

Install towball onto TBM and tighten to **350 Nm** using a calibrated torque wrench (Fig. 6).

