

HAYMAN REESE
PART No: 02736RW
MERCEDES BENZ C CLASS WAGON

INSTALLATION INSTRUCTIONS

PLEASE ENSURE THAT INSTRUCTIONS ARE UNDERSTOOD PRIOR TO FITMENT



Installation Time: Approx 60 Mins

Towbar Installation Instructions **Towbar capacity**
MERCEDES BENZ C CLASS WAGON 2010-on

Part Number 02736RW

Max Towing Braked 1800kg
Max Static Ball Load 180kg

Hayman Reese (Cequent)
PO Box 4050, Dandenong South VIC 3164
Phone 1800 812 017 Email info@haymanreese.com.au

HAYMAN REESE
PART No: 02736RW
MERCEDES BENZ C CLASS WAGON 2010 - on

INSTALLATION INSTRUCTIONS

PLEASE ENSURE THAT INSTRUCTIONS ARE UNDERSTOOD PRIOR TO FITMENT

Warning:

1. Do not, drill, cut, weld or otherwise modify the towbar.
2. If you are using electric welding on a motor vehicle, **always** check that the vehicle is not equipped with electronic engine or instrument management equipment. Failure to do so could **destroy** any onboard computers. If in doubt, check with the vehicle's manufacturer.

1. **General:** Ensure all hardware items have been included refer to assembly diagram.
2. It is recommended that the instructions are read through and completely understood before making any attempt to fit this product.
3. Be wary of any changes to vehicle designs or other accessories that may conflict with the installation of this product.
4. Before drilling ensure that the area is clear of fuel, electrical & other components.
5. All holes drilled into the body panels shall have all burrs & swarf removed then coated with a suitable rust preventative paint.
6. The high tensile fasteners supplied with this product were used to achieve the specified rating. If replacement is required ensure that fasteners of the same rating & quality are used. Contact an authorised **Hayman Reese** dealer if further information is required.
7. Ensure that all hardware is fastened to torque list below check fasteners on regular basis.
8. Towbar load rating sticker provided with this product shall be conspicuously located on inside rear end of the driver's door. **(See diagram below).**
9. Hayman Reese recommends that you check your tow ball to ensure that it complies with the Australian standards **AS 4177.2**.
10. **PLEASE NOTE:** It is advised to remove your lug or tbm when not actually towing so as to produce a clear view of the vehicles registration plate if obscured, and to also provide maximum available departure angle.

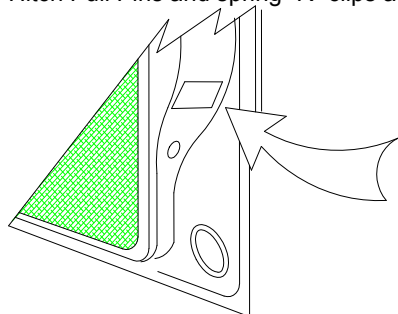
Tow bar Maintenance and Care.

Hayman Reese recommends that bolt torque's, as listed below, are routinely and regularly inspected and checked for correct tension. Replace any worn or defective parts.

We recommended to remove Tow Ball Mounts (TBM's, tongues or lugs) when not being used for any considerable length of time.

So as to avoid injury, when not towing it is suggested that the tongue, Pull Pin and R-clip are removed then stored in a safe, clean and dry place, away from excessive moisture.

Hitch Pull Pins and spring "R" clips are regularly checked for proper installation. Replace any worn or defective parts.



**Place load rating sticker
inside driver's door here**

**RECOMMENDED ASSEMBLY TORQUE
LISTING**

Diameter Grade 8.8 Bolt

M6	9.5 Nm
M8	21.7 Nm
M10	43.4 Nm
M12	77.3 Nm
M14	146 Nm
M16	189.8 Nm

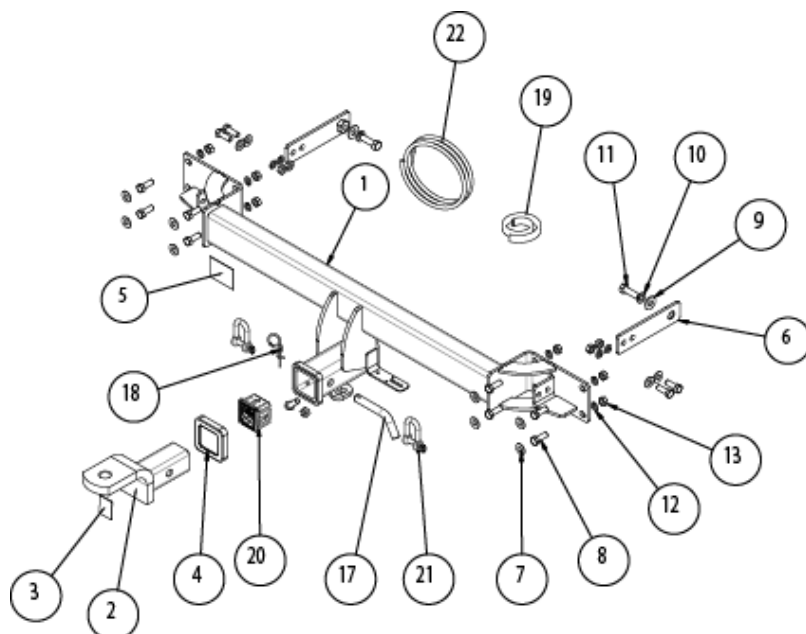
FOR TOWING PURPOSES ONLY

**For towing capacity details please refer to vehicle
owner's manual or to the manufacturer. Overloading can
void your warranties.**

HAYMAN REESE
PART No: 02736RW
MERCEDES BENZ C CLASS WAGON 2010 - on

INSTALLATION INSTRUCTIONS

PLEASE ENSURE THAT INSTRUCTIONS ARE UNDERSTOOD PRIOR TO FITMENT



ITEMS 14, 15 & 16 ARE NOT SHOWN IN THE LAYOUT DIAGRAM
 FIGURE 1 – LAYOUT DIAGRAM

ITEM NO.	DESCRIPTION	QTY.
1	M-B C CLASS WELD ASSY.	1
2	TBM	1
3	H.R STICKER	1
4	Hitch Box Collar Cover	1
5	ACRYLIC CP	1
6	CHASSIS BRACKET ASSY.	2
7	Washer Flat M10 x 23 x 2 z/p	12
8	M10 x 30 1.5P BOLT	13
9	WASHER M12x28.8x3mm	2
10	SPRING WASHER 12X4X2.5	2
11	BOLT M12-1.75x40 GR8.8	2
12	M10 X 3.5 X 2.2 SPRING WSHR	12
13	NUT HX M10 - 1.5 Z/P	13
14	FITTING INSTRUCTION	1
15	Warranty Card	1
16	LOAD RATING LABELS	1
17	PULL PIN	1
18	SPRING COTTER PIN ASSY	1
19	BUMPER TRIM PINCH WELD 300mm	1
20	Hitch Box Cover	1
21	D' SHACKLE	2
22	WIRING LOOM	1

HAYMAN REESE

PART No: 02736RW

MERCEDES BENZ C CLASS WAGON 2010 - on

INSTALLATION INSTRUCTIONS

PLEASE ENSURE THAT INSTRUCTIONS ARE UNDERSTOOD PRIOR TO FITMENT



Figure 2 – Remove scrivenets, nut and bolt from wheel arch.

Note: Position the vehicle to a safe working height.

1. Remove scrivenets x 2 from the middle, M10 nut x 1 from the bottom and M10 bolt x 1 from the top of the wheel arch, as shown in Figure 2.

Note: Passenger side shown, repeat the step for driver side.

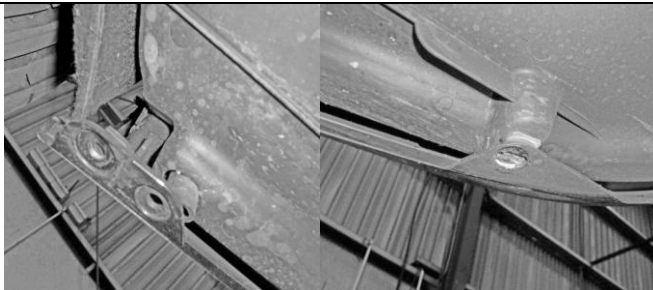


Figure 3 – Remove scrivenets and torx screws.

2. Remove scrivenet x 1, and torx screw x 1 from driver side, underneath the bumper.
3. Remove torx screws x 2 from the passenger side, underneath the bumper.

Refer to Figure 3.

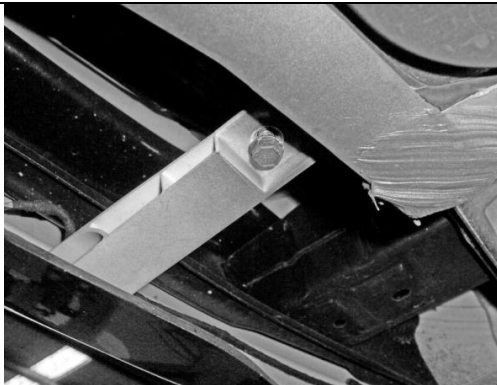


Figure 4 – Remove M10 bolts x 2.

4. Remove M10 bolts x 2 from the centre section, underneath the bumper. Refer to Figure 4.

INSTALLATION INSTRUCTIONS

PLEASE ENSURE THAT INSTRUCTIONS ARE UNDERSTOOD PRIOR TO FITMENT

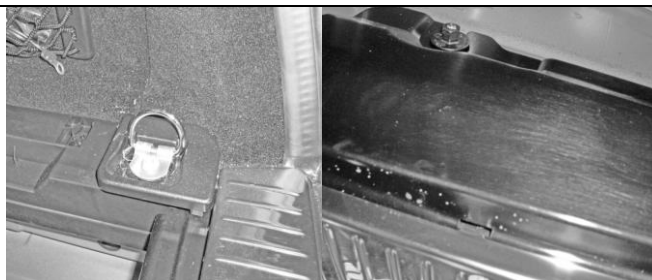


Figure 5 – Remove plastic tray.

5. Remove torx screw x 1 on both driver and passenger side and then remove the nuts x 2 to remove the plastic tray.

Refer to Figure 5.



Figure 6 – Remove screws inside panel.

6. Remove screws x 2 inside the panel after removing the plastic tray, as shown in Figure 6.

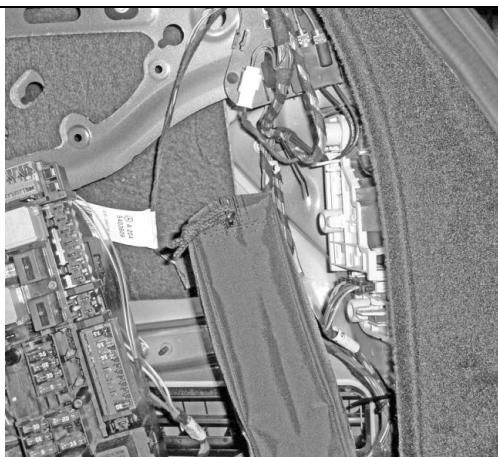


Figure 7 – Remove lights.

7. Remove the lights, by removing nuts x 4, as shown in Figure 7.

Note: Driver side shown, repeat the step for passenger side.

8. Pull the bumper out carefully.

Note: Disconnect the wiring when removing the bumper.

HAYMAN REESE

PART No: 02736RW

MERCEDES BENZ C CLASS WAGON 2010 - on

INSTALLATION INSTRUCTIONS

PLEASE ENSURE THAT INSTRUCTIONS ARE UNDERSTOOD PRIOR TO FITMENT

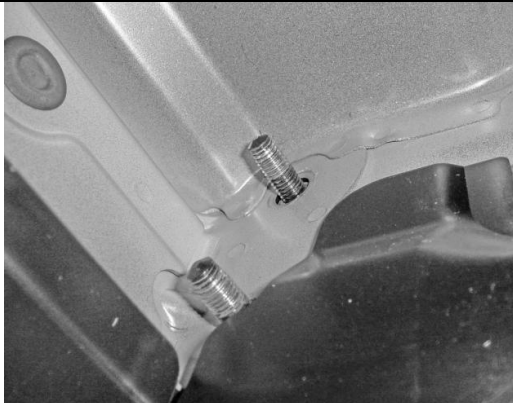


Figure 8 – Remove impact beam.

9. Remove the impact beam, by removing bolts x 4. 2 bolts are shown in Figure 8 and 2 are on the other side.

Note: If the towbar is removed, the impact beam must be fitted back, to provide support and rigidity to the bumper.

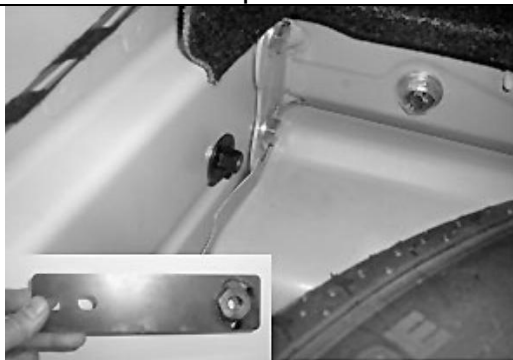


Figure 9 – Fit the side arm.

10. Fit the side arm, in the same way, as shown in Figure 9, with the weld-nut acting as a spacer between the side arm and the chassis rail.

Note: Passenger side shown, repeat the step for driver side.

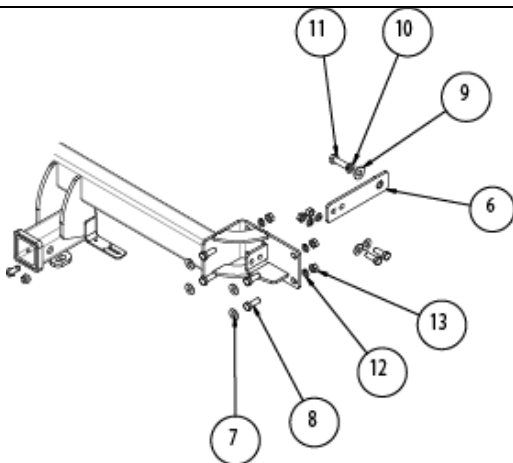


Figure 10 – Fit the towbar to the vehicle.

11. Fit the towbar to the vehicle, and to the side arm, with the relevant fasteners, as shown in Figure 10.
12. Torque the bolts to the required torque mentioned on page 2.

HAYMAN REESE

PART No: 02736RW

MERCEDES BENZ C CLASS WAGON 2010 - on

INSTALLATION INSTRUCTIONS

PLEASE ENSURE THAT INSTRUCTIONS ARE UNDERSTOOD PRIOR TO FITMENT

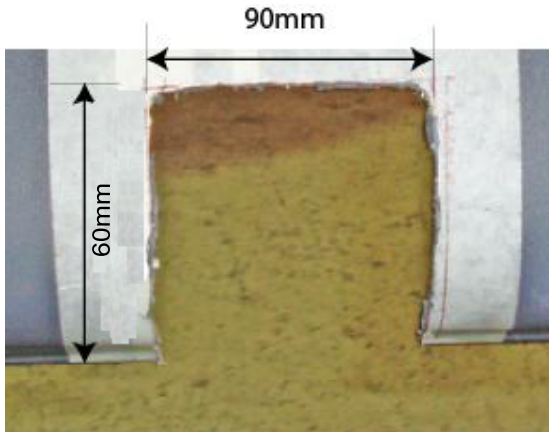


Figure 11 – Bumper cut illustration.

13. Cut the bumper, as per the illustrations provided in Figure 11.
14. Fit the bumper trim on the portion of the bumper being cut.
15. Fit the bumper back in the reverse order.
16. Fit the plastic tray and light back in the reverse order.

17. Affix the load rating label, as shown on page 2.
18. Use the Pull pin & R Clip, shown on page 3, as per the directions mentioned on page 2.
19. Insert the D Shackles, shown on page 3, into the chain connection plate.
20. Install the wiring, as per the wiring instructions followed.

HAYMAN REESE
PART No: 100515-WL
MERCEDES C CLASS WAGON
INSTALLATION INSTRUCTIONS

PLEASE ENSURE THAT INSTRUCTIONS ARE UNDERSTOOD PRIOR TO FITMENT

Wiring Loom Installation Instructions

MERCEDES C CLASS WAGON
Part No: 100515-WL

ECU Required: 04832
Tail Harness Length Required: 1200mm

Note: Factory RPA cannot be overridden, however it can be disable through a switch on the vehicle dash.

Wiring Loom Installation Time: Approx 30 Mins

Issue Date 17-11-10

Page 1

Part No: 100515-WL

Hayman Reese (Cequent)
PO Box 4050, Dandenong South VIC 3164
Phone 1800 812 017 Email info@haymanreese.com.au

www.haymanreese.com.au



HAYMAN REESE
PART No: 100515-WL
MERCEDES C CLASS WAGON
INSTALLATION INSTRUCTIONS

PLEASE ENSURE THAT INSTRUCTIONS ARE UNDERSTOOD PRIOR TO FITMENT

1. In the luggage compartment, remove the floor cover carpet (1).



2. Remove the rear trim (1) by first removing the two clips (2).



3. Remove the LHS side access panel cover (1).



Issue Date 17-11-10

Page 2

Part No: 100515-WL

Hayman Reese (Cequent)
PO Box 4050, Dandenong South VIC 3164
Phone 1800 812 017 Email info@haymanreese.com.au

www.haymanreese.com.au



HAYMAN REESE
PART No: 100515-WL
MERCEDES C CLASS WAGON
INSTALLATION INSTRUCTIONS

PLEASE ENSURE THAT INSTRUCTIONS ARE UNDERSTOOD PRIOR TO FITMENT

4. Remove the RHS tail light access panel cover and remove the vehicle first aid kit (1).



5. Drill a Ø31mm hole on the RHS of the hard plastic plug (1).
6. File any rough or sharp edges.



7. Remove the LHS tail light assembly (1), by removing the three fasteners (2).
8. Repeat step for the RHS.



Issue Date 17-11-10

Page 3

Part No: 100515-WL

Hayman Reese (Cequent)
PO Box 4050, Dandenong South VIC 3164
Phone 1800 812 017 Email info@haymanreese.com.au

www.haymanreese.com.au



HAYMAN REESE

PART No: 100515-WL

MERCEDES C CLASS WAGON

INSTALLATION INSTRUCTIONS

PLEASE ENSURE THAT INSTRUCTIONS ARE UNDERSTOOD PRIOR TO FITMENT

9. In the upper RHS of the luggage compartment, locate the tail light wiring harness.
10. Following the table below, connect the ezy taps (2) to the vehicle tail light wires (3) then connect the trailer harness wire terminals (4) to the ezy taps (2).

Function	Trailer Patch	Vehicle Connector
R.IND	GREEN / BLACK	BLACK / GREEN
REVERSE	BLACK / WHITE	GREY / YELLOW
TAIL / BRAKES	RED / BLACK	BLACK / YELLOW



11. Route the trailer patch harness (P/No: 100515-WL) (1) along the rear of the luggage compartment towards the LHS.



12. Route the trailer patch harness (1) under the LHS side trim and up towards the LHS tail light assembly.
13. Following the table below, connect the ezy tap (2) to the vehicle L.IND wire (3) then connect the trailer harness 'YELLOW/BLACK' L.IND wire terminal (4) to the ezy tap (2).

Function	Trailer Patch	Vehicle Connector
L.IND	YELLOW / BLACK	BLACK / WHITE



Issue Date 17-11-10

Page 4

Part No: 100515-WL

Hayman Reese (Cequent)
 PO Box 4050, Dandenong South VIC 3164
 Phone 1800 812 017 Email info@haymanreese.com.au

www.haymanreese.com.au

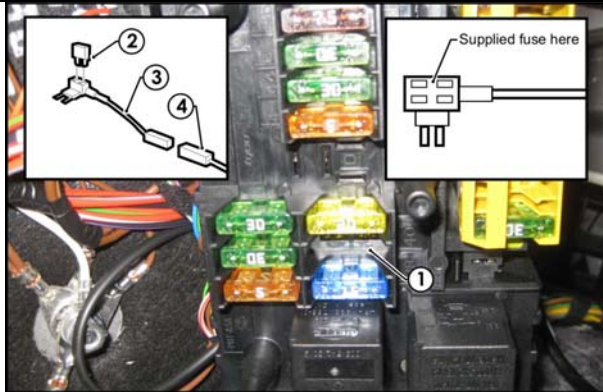


HAYMAN REESE
PART No: 100515-WL
MERCEDES C CLASS WAGON
INSTALLATION INSTRUCTIONS

PLEASE ENSURE THAT INSTRUCTIONS ARE UNDERSTOOD PRIOR TO FITMENT

14. Locate the vacant fuse slot (1) (fuse location 36).
15. Insert the supplied 20-amp fuse (2) into the upper slot of the add-a-fuse harness (3).
16. Plug the add-a-fuse harness (3) into the vacant fuse slot (1) on the fuse panel.
17. Connect the 'ORANGE' power wire 1-way connector (4) into the add-a-fuse harness (3) mating connector.

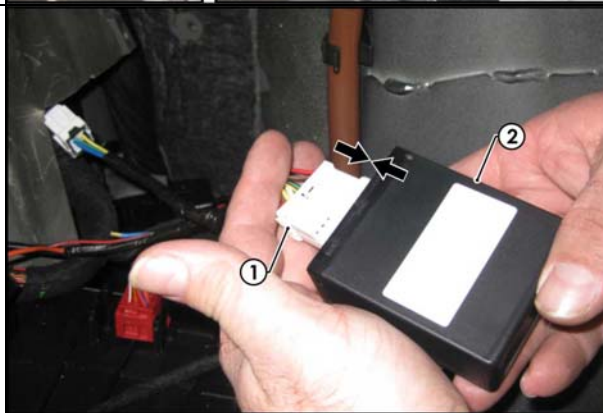
Note: If the fuse location is occupied, first remove the vehicle fuse and insert it in the lower slot of the add-a-fuse harness (3).



18. Connect the trailer patch harness ground ring terminal (1) to the vehicle ground bolt (2).



19. Connect the trailer harness 12-way connector (1) to the ECU (04832) (2).



Issue Date 17-11-10

Page 5

Part No: 100515-WL

Hayman Reese (Cequent)
PO Box 4050, Dandenong South VIC 3164
Phone 1800 812 017 Email info@haymanreese.com.au

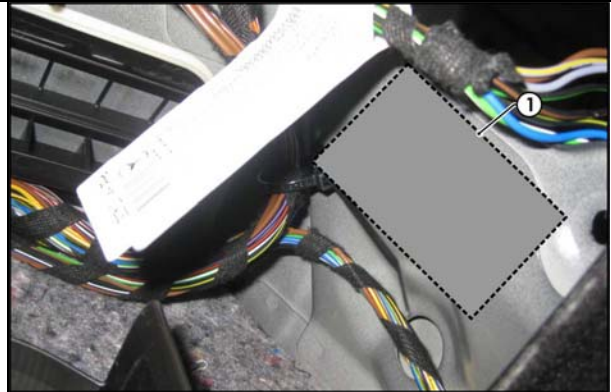
www.haymanreese.com.au



HAYMAN REESE
PART No: 100515-WL
MERCEDES C CLASS WAGON
INSTALLATION INSTRUCTIONS

PLEASE ENSURE THAT INSTRUCTIONS ARE UNDERSTOOD PRIOR TO FITMENT

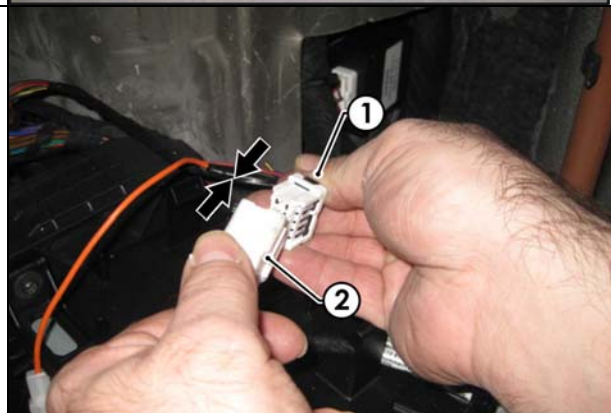
20. Apply double sided tape to the ECU (1) and adhere it to the vehicle sheet metal on the RHS of the luggage compartment.



21. Mount the trailer socket (1) to the towbar mounting bracket using M4 fasteners (not supplied).
22. Route the tail harness (2) across the towbar towards the RHS of the vehicle and up through the previously drilled out hole.
23. Ensure the tail harness grommet is seated correctly and secure in place using a cable tie (not supplied).



24. Connect the tail harness (tail length 1200mm) 8-way connector (1) to the trailer harness mating 8-way connector (2).



Issue Date 17-11-10

Page 6

Part No: 100515-WL

Hayman Reese (Cequent)
PO Box 4050, Dandenong South VIC 3164
Phone 1800 812 017 Email info@haymanreese.com.au

www.haymanreese.com.au



HAYMAN REESE
PART No: 100515-WL
MERCEDES C CLASS WAGON
INSTALLATION INSTRUCTIONS

PLEASE ENSURE THAT INSTRUCTIONS ARE UNDERSTOOD PRIOR TO FITMENT

- | | |
|--|--|
| <ol style="list-style-type: none">25. Test the trailer harness function using a light board or multimeter.26. Secure all harnesses using cables ties (not supplied).27. Re-fit all removed parts and secure all fasteners, ensuring there are no squeaks or rattles.28. Place instructions in glove box after fitment | |
|--|--|

Issue Date 17-11-10

Page 7

Part No: 100515-WL

Hayman Reese (Cequent)
PO Box 4050, Dandenong South VIC 3164
Phone 1800 812 017 Email info@haymanreese.com.au

www.haymanreese.com.au





FITTING INSTRUCTIONS

Smart Pin (55070BL)

• These fitting instructions are supplied to ensure understanding of how the SMART PIN should be fitted and used correctly.

• Once installed, we recommend **ALL** instructions are kept and placed in the vehicle glove box.

NOTE: Routine maintenance and inspection of the towbar & SMART PIN is required. Regularly inspect for wear and check the tightness of the SMART PIN NUT. Follow instructions below to retighten the nut when necessary.

***Do not tow with your vehicle if the R CLIP or the SMART PIN NUT is loose or missing. Replacement parts are available from your Hayman Reese Distributor.**

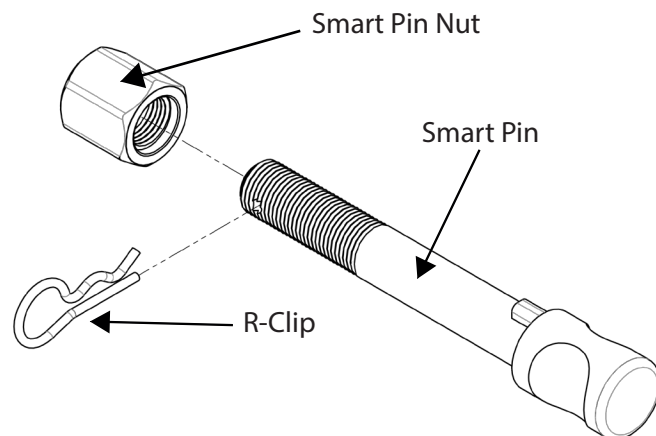
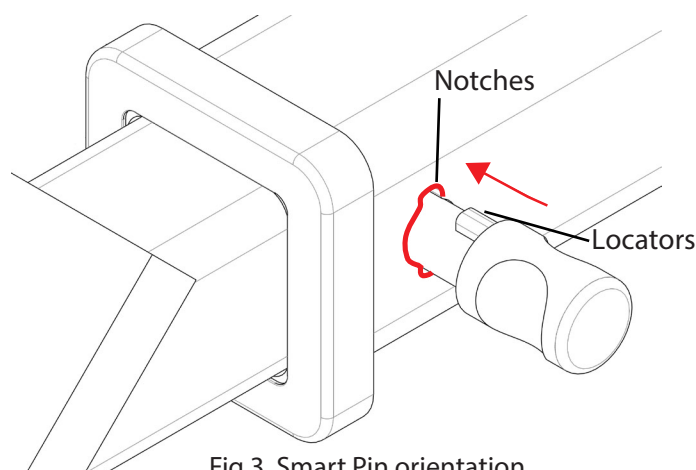
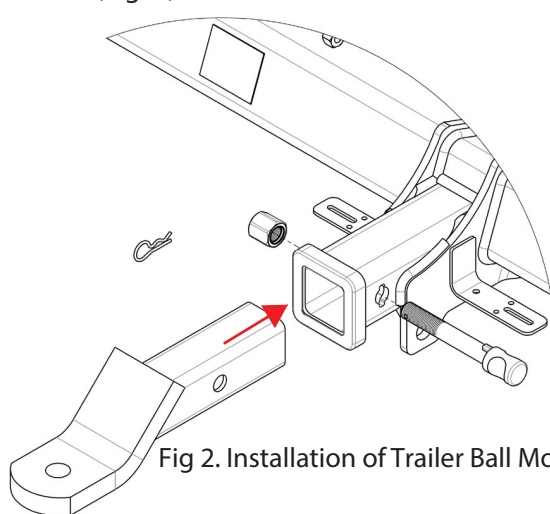


Fig 1. Smart Pin assembly

STEP 1

Insert Trailer Ball Mount (TBM) into towbar HITCHBOX, aligning hole in TBM SHANK with hole in HITCHBOX (Fig. 2).



STEP 2

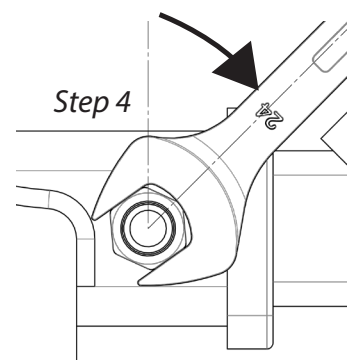
Insert SMART PIN through hole in HITCHBOX and hole in TBM SHANK; ensure the LOCATORS are inserted into the NOTCHES in the HITCHBOX (Fig. 3).

STEP 3

Screw SMART PIN NUT onto SMART PIN; tighten SMART PIN NUT until finger tight, ensuring TBM is restrained from movement.

STEP 4

Tighten SMART PIN NUT by turning nut a further 1/8th of a turn in the clockwise direction using a 24mm spanner (Fig 4).



STEP 5

Install SMART PIN R CLIP through the hole on the SMART PIN (Fig. 1).

