



**HAYMAN REESE**  
*LEADING THE WAY*

**PART No: R2537**  
**BMW X3 11/2006-On**

**PLEASE ENSURE THAT INSTRUCTIONS UNDERSTOOD PRIOR TO FITMENT**



**BMW X3 Series 4 Door Wagon Installation Time: Approx 90 Mins**

**Towbar Installation Instructions**  
**Part Number R2537**

**Rated Towbar capacity**  
**Max Towing Braked 2000Kg**  
**Max Static Ball Load 158Kg**

**Ensure that the vehicle owner's manual or the vehicle manufacturer is consulted for the correct towing capacity of each variant of the BMW X 3 range.**

**This product is not recommended for the use of heavy duty weight distribution.**

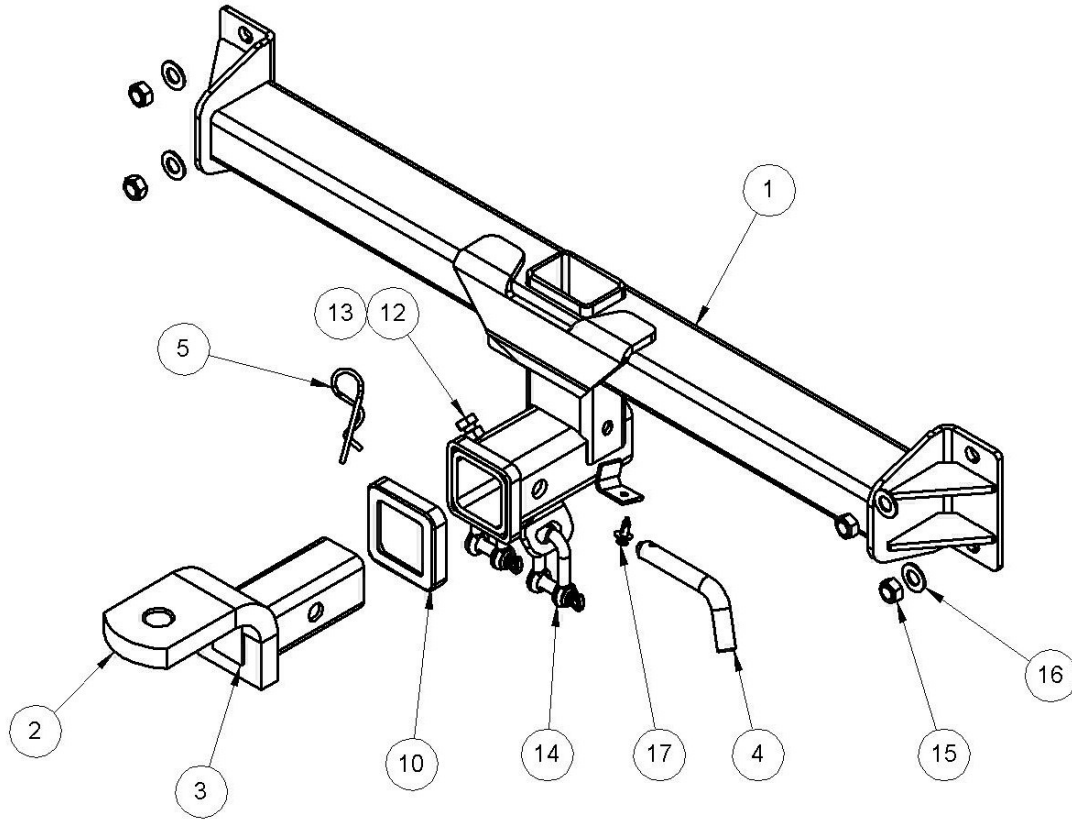
**This product has an inbuilt feature that will prevent the use of such devices. For further information contact year nearest Hayman Reese stockist.**



**HAYMAN REESE**  
LEADING THE WAY

**PART No: R2537**  
**BMW X3 11/2006-On**

PLEASE ENSURE THAT INSTRUCTIONS UNDERSTOOD PRIOR TO FITMENT



LOCATION	PART NO.	QTY.	DESCRIPTION	ITEM NO.
ASSEMBLY	A02537R-A1	1	WELDED ASSEMBLY	1
ASSEMBLY	A21126	1	T.B.MOUNT	2
ASSEMBLY	94603	1	H.R STICKER	3
ASSEMBLY	55010	1	PULL PIN	4
ASSEMBLY	55020	1	SPRING COTTER PIN	5
BOLT PACK	B02537R	1	ASSEMBLY BOLT PACK	6
BOLT PACK	94062	1	BOLT BAG	7
BOLT PACK	95900	1	HR LIFETIME WARRANTY	8
BOLT PACK	R2537-FI	1	FITTING INSTRUCTIONS	9
BOLT PACK	94590	1	HITCH BOX COLLAR COVER	10
BOLT PACK	X2000-158	1	DOOR RATING STICKER	11
BOLT PACK	92040	1	M10 X 20 BOLT	12
BOLT PACK	92310	1	NUT M10 x 1.5P	13
BOLT PACK	94572	2	'D' SHACKLE	14
BOLT PACK	92318	4	NUT M12 NYLOC	15
BOLT PACK	92338	4	Wshr ft 1/2" x 1-1/8" x 16 z/p	16
BOLT PACK	40157	10	SCRIVET CFZ-020-0034	17

**Warning:**

1. Do not, drill, cut, weld or otherwise modify the towbar.
2. If you are using electric welding on a motor vehicle, **always** check that the vehicle is not equipped with electronic engine or instrument management equipment. Failure to do so could **destroy** any onboard



**PLEASE ENSURE THAT INSTRUCTIONS UNDERSTOOD PRIOR TO FITMENT**  
computers. If in doubt, check with the vehicle's manufacturer.

1. **General:** Ensure all hardware items have been included refer to assembly diagram.
2. It is recommended that the instructions are read through and completely understood before making any attempt to fit this product.
3. Be wary of any changes to vehicle designs or other accessories that may conflict with the installation of this product.
4. Before drilling ensure that the area is clear of fuel, electrical & other components.
5. All holes drilled into the body panels shall have all burrs & swarf removed then coated with a suitable rust preventative paint.
6. The high tensile fasteners supplied with this product were used to achieve the specified rating. If replacement is required ensure that fasteners of the same rating & quality are used. Contact an authorised **Hayman Reese** dealer if further information is required.
7. Ensure that all hardware is fastened to torque list below check fasteners on regular basis.
8. Towbar load rating sticker provided with this product shall be conspicuously located on inside rear end of the driver's door. **(See diagram below).**
9. Hayman Reese recommends that you check your tow ball to ensure that it complies with the Australian standards **AS 4177.2**.
10. **PLEASE NOTE:** It is advised to remove your lug or tbn when not actually towing so as to produce a clear view of the vehicles registration plate if obscured, and to also provide maximum available departure angle.

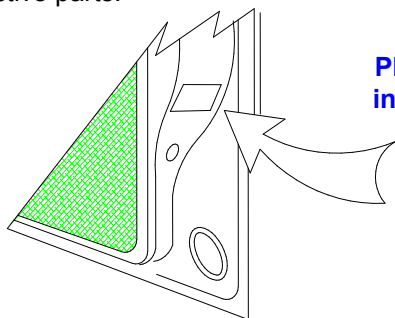
**Tow bar Maintenance and Care.**

Hayman Reese recommends that bolt torque's, as listed below, are routinely and regularly inspected and checked for correct tension. Replace any worn or defective parts.

We recommended to remove Tow Ball Mounts (TBM's, tongues or lugs) when not being used for any considerable length of time.

So as to avoid injury, when not towing it is suggested that the tongue, Pull Pin and R-clip are removed then stored in a safe, clean and dry place, away from excessive moisture.

Hitch Pull Pins and spring "R" clips are regularly checked for proper installation. Replace any worn or defective parts.



Place load rating sticker  
inside driver's door here

<b>RECOMMENDED ASSEMBLY TORQUE LISTING</b>	
<b>Diameter</b>	<b>Grade 8.8 Bolt</b>
M6	9.5 Nm
M8	21.7 Nm
M10	43.4 Nm
M12	77.3 Nm
M14	146 Nm
M16	189.8 Nm

**FOR TOWING PURPOSES ONLY**  
For towing capacity details please refer to vehicle owner's manual or to the manufacturer. **Overloading can void your warranties.**



PLEASE ENSURE THAT INSTRUCTIONS UNDERSTOOD PRIOR TO FITMENT

**Fig 1**



11. Remove rear bumper bar skin via
  - a. Remove four plastic scrivenets from inside each wheel arch see fig 1.

**Fig 2**



12. Remove rear bumper bar skin via
  - a. Remove two screws from underneath each mudflap see fig 2.

**Fig 3**



13. Remove rear bumper bar skin via
  - a. Remove one torx head screw in the vertical plane from each inner wheel arch see fig 3.

**Fig 4**



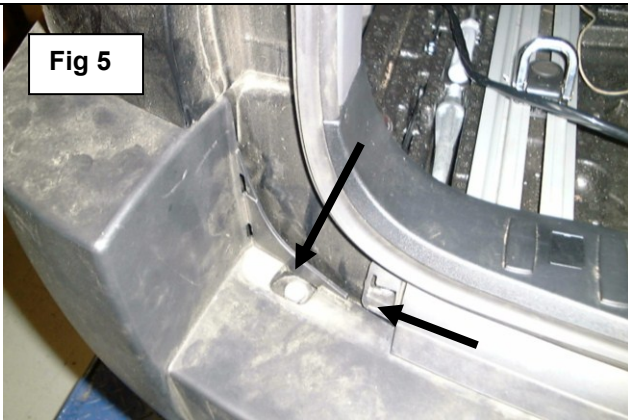
14. Remove rear bumper bar skin via
  - a. Remove one hex screw and two plastic nuts on the under side of the bumper bar skin see fig 4.





PLEASE ENSURE THAT INSTRUCTIONS UNDERSTOOD PRIOR TO FITMENT

Fig 5



15. **Remove rear bumper bar skin via**
- Remove plastic covers each side of inner tailgate cavity see fig 5.
  - Remove one torx head screw each side of tailgate cavity see fig 5.
  - Flex bumper bar out at the sides then pull rearward to remove **caution** two person lift required.
  - Some force may be required to remove.

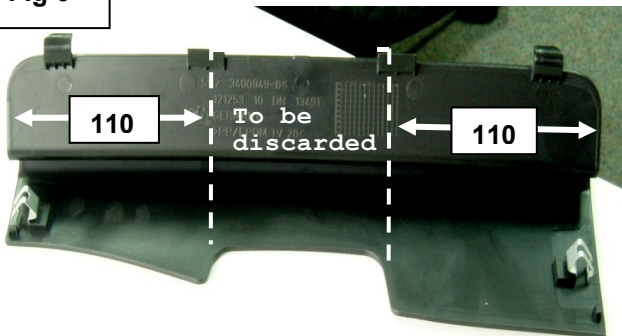
16. **Remove rear impact beam via**

- Remove the rear impact beam via removing two nuts each side of the vehicle then discard the nuts.
- Remove impact beam from the vehicle rear panel some force may be required to remove then discard the impact beam.

17. **Fitment of towbar to the vehicle via**

- Offer towbar to the studs that the impact beam was fastened to.
- Then fasten with the hardware supplied see assembly layout for correct part orientation.
- Fasten hardware to torque listing.

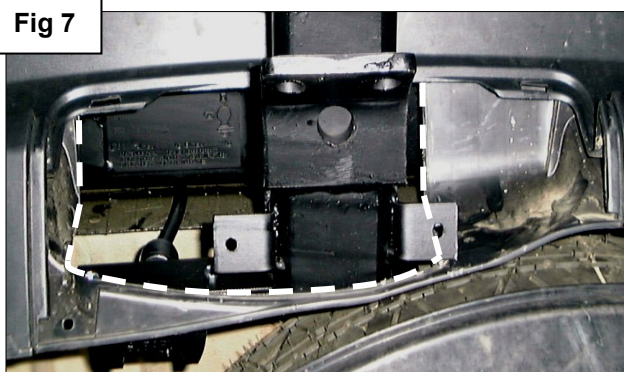
Fig 6



18. **Remove then cut push out window via**

- Remove the rear push out window from the bumper bar.
- On the inside of the window mark out as shown in fig 6.
- Cut with a utility knife or small hacksaw or similar device.
- Ensure that all burrs & raw edges are filed clean.
- Cut out section of bumper that is behind the push out window following the moulding as shown fig 7.

Fig 7



19. **Refit bumper & pop out window via**

- Refit the bumper bar skin in the reverse of steps 15d through to 11a using new scrivets supplied for each mud flap.
- Fit two halves of bumper push out window on each side of the hitch box.
- Drill 6mm hole in window halves so as to align with bumper tags on hitch box.
- Attach bumper window halves to bumper tags with the two scrivets supplied.